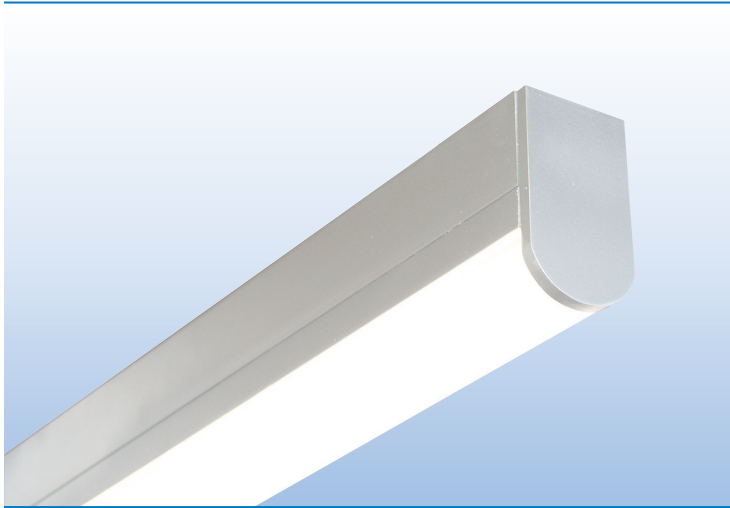
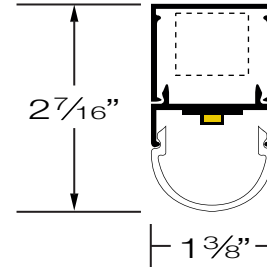


LINEAR CABLE SUSPENDED / SURFACE MOUNT





PROJECT:

TYPE:



SPECIFICATIONS

HOUSING	Extruded aluminum housing up to 12' long. Continuous runs available.
FINISH	Satin anodized or white paint finish standard. Custom finish optional.
LENS	Extruded DR acrylic, snap-on frosted widespread lens.
LED DRIVER	Integral, universal voltage; 0-10V dimming standard; 1% or 10% dimming.
MOUNTING	SURFACE MOUNT: Mounting holes pre-drilled. See page 2 for details. CABLE SUSPENDED: Aircraft cable suspension kit (SK), canopy and prewired with 18/5 SVT cord.
LED's	60,000 hours. (L70), High uniformity, 80 CRI
CERTIFICATION	ETL/CSA listed for damp locations.  2001431  MADE IN THE USA

LED COLOR & LUMEN OPTIONS

4' – 24" BOARDS		LUMENS PER FOOT – WATTS PER FOOT – LUMENS PER WATT								
LED COLOR	CRI	LOW			MEDIUM			HIGH		
WHITE 2700K	80	500 L/FT	3.5 W/FT	136 L/W	870 L/FT	6.5 W/FT	130 L/W	1160 L/FT	9.0 W/FT	127 L/W
WHITE 3000K	80	530 L/FT	3.5 W/FT	144 L/W	915 L/FT	6.5 W/FT	137 L/W	1220 L/FT	9.0 W/FT	133 L/W
WHITE 3500K	80	535 L/FT	3.5 W/FT	144 L/W	920 L/FT	6.5 W/FT	137 L/W	1225 L/FT	9.0 W/FT	133 L/W
WHITE 4000K	80	560 L/FT	3.5 W/FT	151 L/W	970 L/FT	6.5 W/FT	145 L/W	1290 L/FT	9.0 W/FT	140 L/W

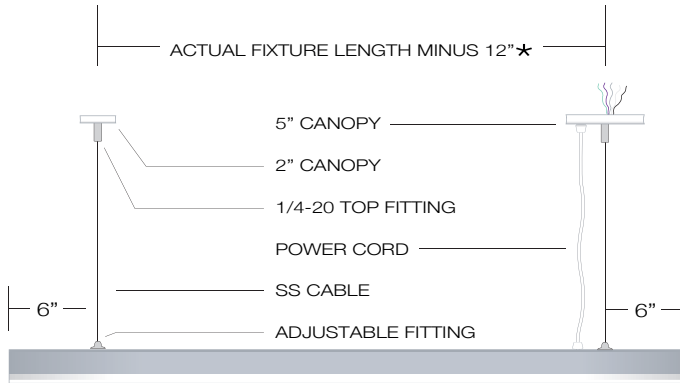
Higher lumen packages available.

PART NUMBER

SERIES	LUMENS	COLOR	VOLTS	MOUNTING	ENDCAP STYLE	FINISH	LENGTH
LN1-RLR	L LOW	27K 2700K	UNV	<u>CABLE SUSPENDED</u>	<u>STANDARD ENDCAP</u>	S SATIN	2' 8'
	M MEDIUM	3K 3000K	(120/277)	SK36 36" CABLE KIT	SEB BLANK ENDS	W WHITE	3' 9'
	H HIGH	35K 3500K	10% DIM	SK48 48" CABLE KIT	SEK ONE END K/O		4' 10'
				SK72 72" CABLE KIT	SBK BOTH ENDS K/O	C CUSTOM	5' 11'
	CP CUSTOM PROGRAMMED (Specify Lumens/FT or Watts/FT)	4K 4000K	UNV 1%	<u>SURFACE MOUNT</u>	<u>ARCHITECTURAL ENDCAP</u>		6' 12'
			(120/277)	SM SURF. MOUNT	AEB BLANK ENDS		7'
			1% DIM	JBP J BOX PLATE	<u>ILLUMINATED ENDCAP</u>		
				WB WALL BRACKET	IEB BLANK ENDS		

MOUNTING

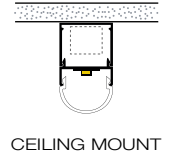
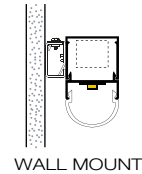
CABLE SUSPENDED



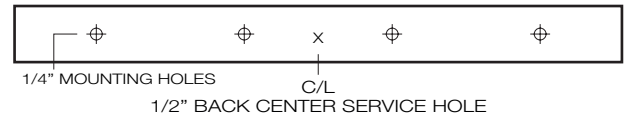
- SK36** 36" Suspension Kit
SK48 48" Suspension Kit
SK72 72" Suspension Kit
 Other cable lengths available.
- Suspension Kit includes:
 (2) Top Fittings for 1/4-20 Rod
 (2) Adjustable Bottom Fittings
 (2) Aircraft Cables
 (1) Prewired 18/5 White SVT Cord
 (1) 5" White Canopy with Mounting Hardware
 (1) 2" White Canopy

- *Custom pendant spacing available; consult factory
 *Lengths over 8' require center cable support
 *EM option includes 18/6 cord

SURFACE MOUNT

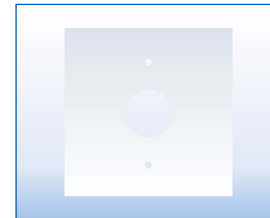


MOUNTING DETAILS



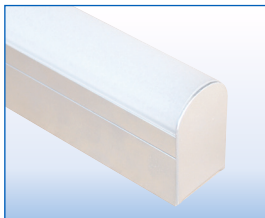
- 1/4" Mounting holes provided evenly spaced on back channel.
- 1/2" Back center service hole for snap-in connector provided for surface mount applications when using standard blank endcap or architectural endcap.
- 2' fixtures require off center service hole due to 12" driver

Note: Narrow housing will not cover recessed J Box. Whip feed recommended. Use optional "JBP" canopy plate for J-Box mount. (See Picture Below)



J-BOX PLATE
JBP 5" FLAT CANOPY PLATE
 TO COVER J-BOX

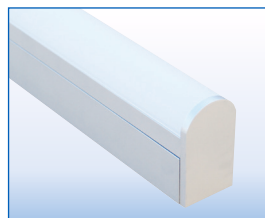
ENDCAP STYLES



STANDARD ENDCAP

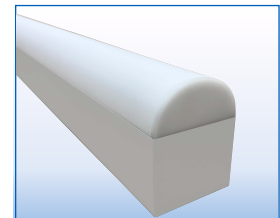
K/O OPTIONS

- SEB** BLANK ENDS
SEK ONE END K/O+
SBEK BOTH END K/O+



ARCHITECTURAL ENDCAP

- AEB** BLANK ENDS
3/16" PLATE ENDCAP++
1/2" BACK SERVICE HOLE



ILLUMINATED ENDCAP

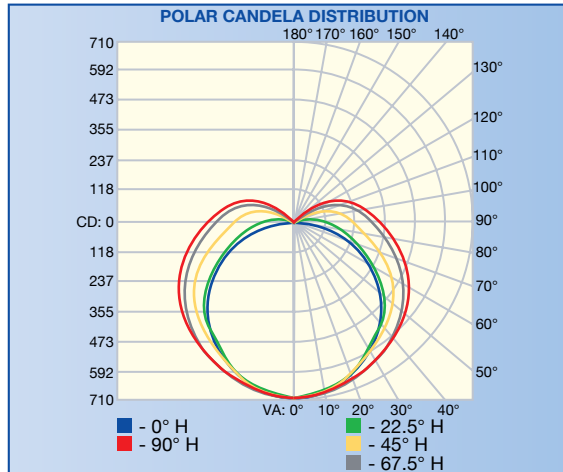
- IEB** BLANK ENDS

FIXTURE LENGTHS

NOMINAL LENGTH	2'	3'	4'	5'	6'	7'	8'	9'	10'	11'	12'
ACTUAL LENGTH	23"	34"	49"	56"	73"	89"	97"	111"	121"	133"	145"

SPECIFICATIONS ARE SUBJECT TO CHANGE DUE TO CONTINUOUS ADVANCES IN TECHNOLOGY © PRIMUS LIGHTING, INC. ALL RIGHTS RESERVED

PHOTOMETRICS / CANDELA DISTRIBUTION .IES files available online or by calling the factory.



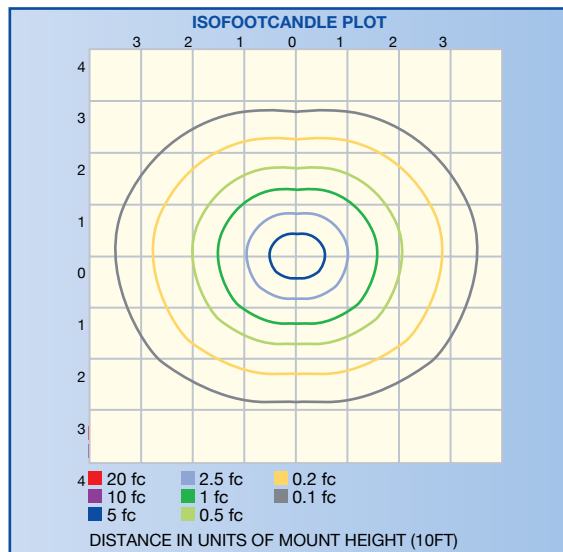
LN1 – RLR ROUND LENS

POLAR GRAPH

REPORT NO.: 103499092LAX-002

Based on 4' linear fixture at medium lumens (35K 903L/FT x 4' = 3612L)

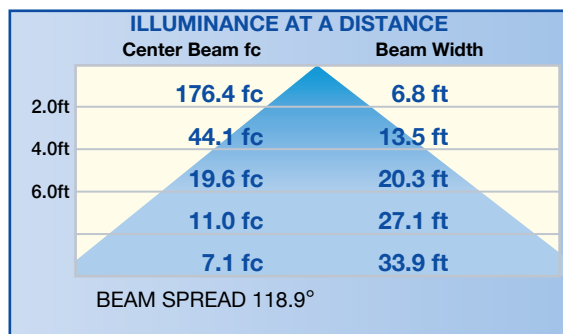
ISOILLUMINATION PLOT



ZONAL LUMENS & PERCENTAGES AT 25°C

ZONE	LUMENS	% LUMINAIRE
0-10	66.8	2.0
10-20	193.2	5.7
20-30	300.7	8.9
30-40	380.7	11.2
40-50	426.7	12.6
50-60	432.5	12.8
60-70	402.5	11.9
70-80	346.9	10.2
80-90	278.5	8.2
90-100	213.4	6.3
100-110	155.6	4.6
110-120	101.3	3.0
120-130	53.2	1.6
130-140	25.2	0.7
140-150	10.9	0.3
150-160	2.9	0.1
160-170	0.3	0.0

ILLUMINANCE – CONE OF LIGHT



ZONAL LUMEN SUMMARY & PERCENTAGES AT 25°C

ZONE	LUMENS	% LUMINAIRE
0-30	560.7	16.5
0-40	941.4	27.8
0-60	1801	53.1
60-90	1028	30.3
0-90	2829	83.4
90-180	562.7	16.6
0-180	3391	100.0