

E L E M E N T S

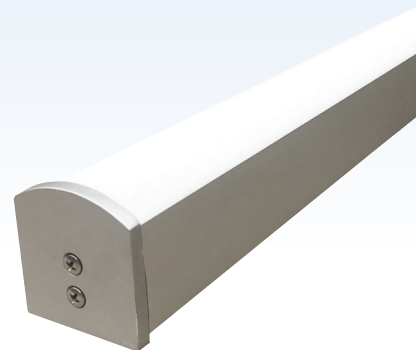
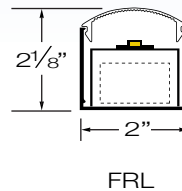
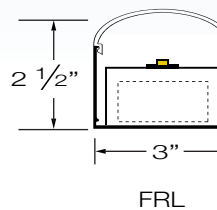
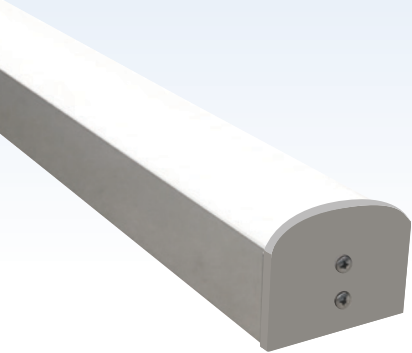
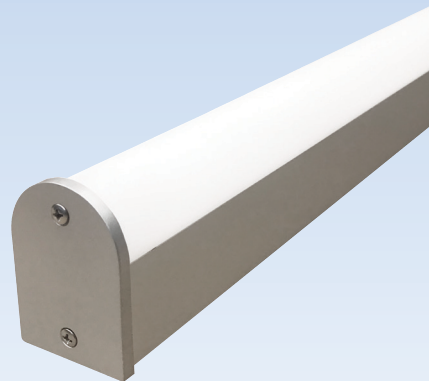
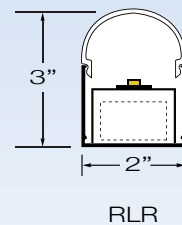
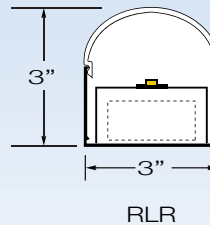
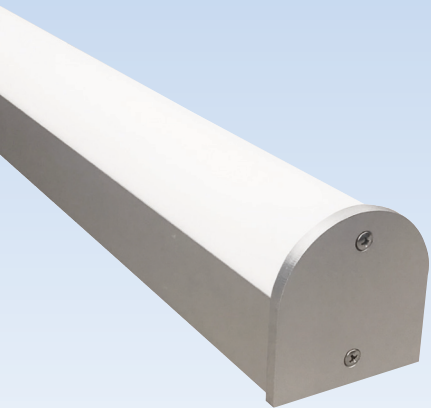
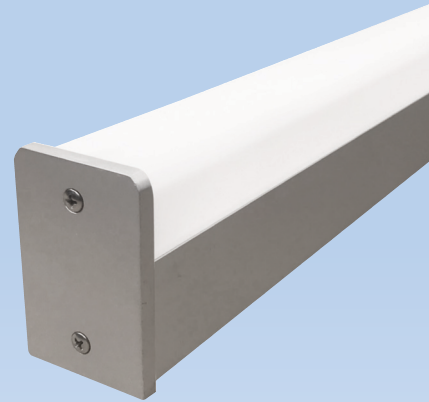
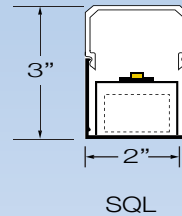
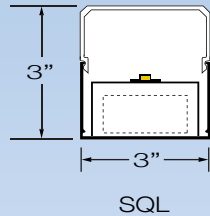
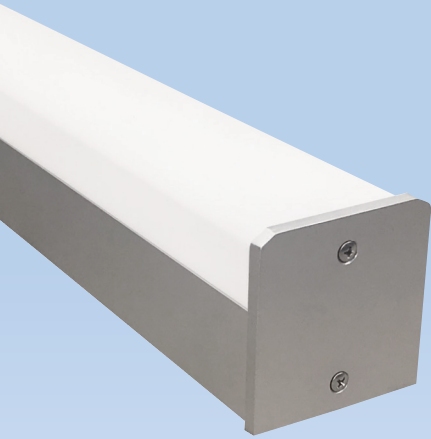


L E D W E T L O C A T I O N



ELEMENTS 3

ELEMENTS 2



SPECIFICATIONS

HOUSING

2" & 3" Wide extruded aluminum housing up to 12' long. Continuous runs available.

FINISH

Satin anodized or white paint finish standard. Custom finish optional.

LENS

Three options extruded DR acrylic, snap-on frosted widespread lens. No Pixelization

LED DRIVER

Integral, universal voltage; 0-10V dimming standard; 1% or 10% dimming.

LED's

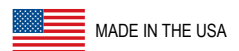
(LED boards) 50,000 hours. (L70), 85 CRI, 2700K, 3000K, 3500K and 4000K.

MOUNTING

Surface Mount

CERTIFICATION

ETL/CSA listed for wet locations.



MEETS OR EXCEEDS IP65 RATING