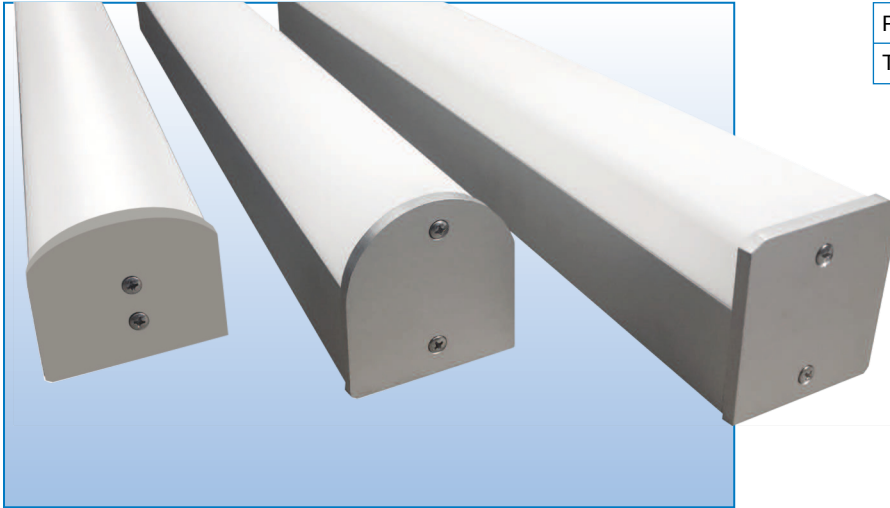
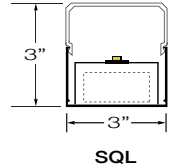
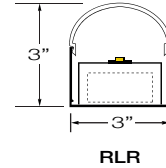
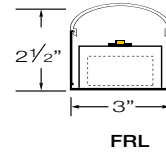


LED WET LOCATION





PROJECT:

TYPE:



SPECIFICATIONS

HOUSING	3" Wide extruded aluminum housing up to 12' long. Continuous runs available.
FINISH	Satin anodized or white paint finish standard. Custom finish optional.
LENS	3 Options extruded DR acrylic, snap-on frosted widespread lens. See page 2 for details.
LED DRIVER	Integral, universal voltage; 0-10V dimming standard; 1% or 10% dimming.
MOUNTING	SURFACE MOUNT: See page 2 for details and options.
LED's	(LED boards) 50,000 hours. (L70), 80 CRI, 2700K, 3000K, 3500K and 4000K.
CERTIFICATION	ETL/CSA listed for wet locations.  2001431  MADE IN THE USA

LED COLOR & LUMEN OPTIONS

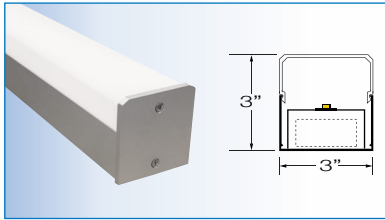
		LUMENS PER FOOT – WATTS PER FOOT – LUMENS PER WATT								
LED COLOR	CRI	LOW			MEDIUM			HIGH		
WHITE 2700K	80	500 L/FT	3.5 W/FT	136 L/W	870 L/FT	6.5 W/FT	130 L/W	1160 L/FT	9.0 W/FT	127 L/W
WHITE 3000K	80	530 L/FT	3.5 W/FT	144 L/W	915 L/FT	6.5 W/FT	137 L/W	1220 L/FT	9.0 W/FT	133 L/W
WHITE 3500K	80	535 L/FT	3.5 W/FT	144 L/W	920 L/FT	6.5 W/FT	137 L/W	1225 L/FT	9.0 W/FT	133 L/W
WHITE 4000K	80	560 L/FT	3.5 W/FT	151 L/W	970 L/FT	6.5 W/FT	145 L/W	1290 L/FT	9.0 W/FT	140 L/W

Higher lumen packages available.

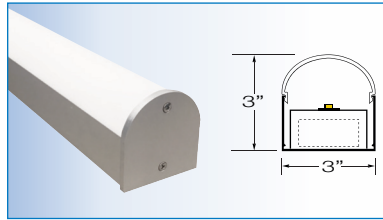
PART NUMBER

SERIES	LUMENS	COLOR	VOLTS	FEED	OPTIONS	FINISH	LENGTH
EL3-SQL-LED	L LOW	27K 2700K	UNV1 (120/277) 1% DIM	EF END FEED	MS MOTION SENSOR	S SATIN	2' 8'
EL3-RLR-LED	M MEDIUM	3K 3000K		FD FIELD DRILL	MSP BI-LEVEL MOTION SENSOR	W WHITE	3' 9'
EL3-FRL-LED	H HIGH	35K 3500K	UNV (120/277) 10% DIM	CR CONTINUOUS RUNS	JBP J BOX PLATE	C CUSTOM	4' 10'
	CP CUSTOM PROGRAMMED (Specify Lumens/FT or Watts/FT)	4K 4000K		CONSULT FACTORY FOR CONTINUOUS RUNS FEED			5' 11'
							6' 12'
							7'

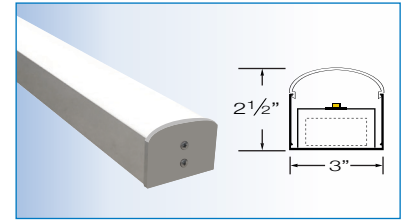
LENS OPTIONS



EL3 – SQL – LED
SQUARE LENS

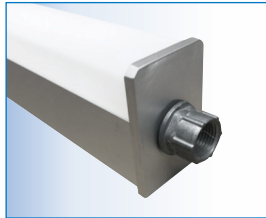


EL3 – RLR – LED
ROUND LENS

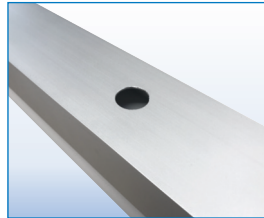


EL3 – FRL – LED
FLAT ROUND LENS

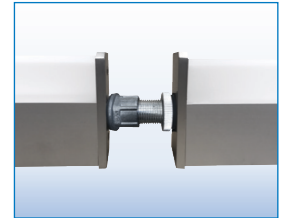
FEED OPTIONS



EF – END FEED
1/2" END FEED CONNECTOR
(INCLUDED)



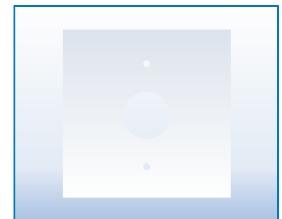
FD – FIELD DRILL
ONLY ON BACK OF HOUSING



CR – CONTINUOUS RUNS
AVAILABLE. CONSULT
FACTORY FOR DETAILS

MOUNTING OPTIONS

- Surface Mount
- Consult factory for pendant mount or any other mounting requirements.
- Mounting holes must be field drilled and siliconed covered.
- Drain holes must be field drilled at lowest point of fixture.
- 2' Fixture requires off center service hole due to 12" driver.
- Narrow housing will not cover recessed J Box. Whip feed recommended. Use optional "JBP" canopy plate for J-Box mount.



J-BOX PLATE
JBP 5" FLAT CANOPY PLATE
TO COVER J-BOX

SENSOR OPTIONS

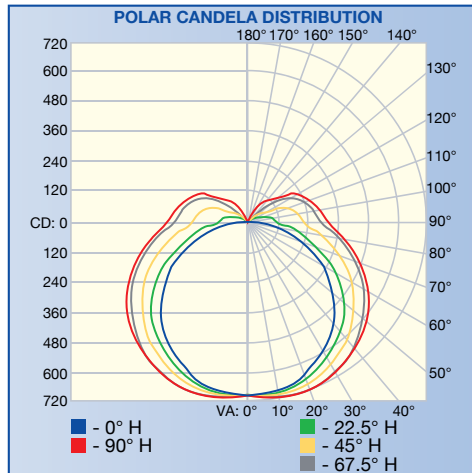


MOTION SENSOR
MS MOTION SENSOR
MSP PROGRAMMABLE BI-LEVEL
(MOTION/LIGHT SENSOR
MOUNTS UNDER LENS
ADDS 3" TO FIXTURE LENGTH)

FIXTURE LENGTHS

NOMINAL LENGTH	2'	3'	4'	5'	6'	7'	8'	9'	10'	11'	12'
ACTUAL LENGTH	26"	35"	50"	57"	74"	90"	98"	112"	122"	134"	146"

PHOTOMETRICS / CANDELA DISTRIBUTION .IES files available online or by calling the factory.

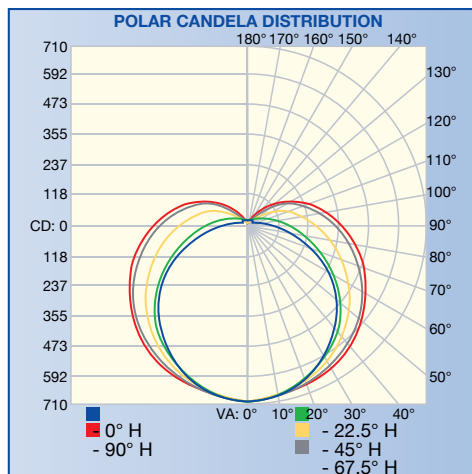


EL3 – SQL – LED 3" SQUARE LENS

POLAR GRAPH

REPORT NO.: 103499092LAX-001

Based on 4' linear fixture at medium lumens (35K 903L/FT x 4' = 3612L)

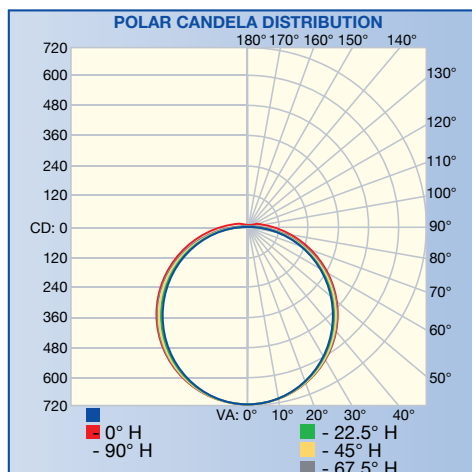


EL3 – RLR – LED 3" ROUND LENS

POLAR GRAPH

REPORT NO.: 103499092LAX-002

Based on 4' linear fixture at medium lumens (35K 903L/FT x 4' = 3612L)



EL3 – FRL – LED 3" FLAT ROUND LENS

POLAR GRAPH

REPORT NO.: 103499092LAX-003

Based on 4' linear fixture at medium lumens (35K 903L/FT x 4' = 3612L)