

DECOSTRING (DSW) SERIES

FESTOON LIGHTING SYSTEM



PROJECT

TYPE

NOTES

FEATURES

DURABLE CONSTRUCTION

Built with high-quality components, including stainless steel aircraft cable for long runs and added strength, UV-rated wire for extended durability, UV-rated zip ties for secure fastening, and phenolic sockets designed to withstand harsh environments. Engineered to remain resilient and fully functional in extreme weather conditions.

VERSATILE APPLICATIONS

Decostrings are a specification-grade festoon lighting system engineered to endure harsh year-round conditions. Ideal for restaurants, hospitality venues, cityscape enhancements, and theme park installations, they offer both functional lighting and aesthetic appeal.

CUSTOMIZATION

Decostrings are custom-built to your specifications, offering precise run lengths and personalized lamp spacing. With a wide selection of lamps and decorative shades, you can tailor the lighting to match your vision. This level of customization brings your project ideas to life, ensuring both functionality and aesthetic appeal.

WET-RATED

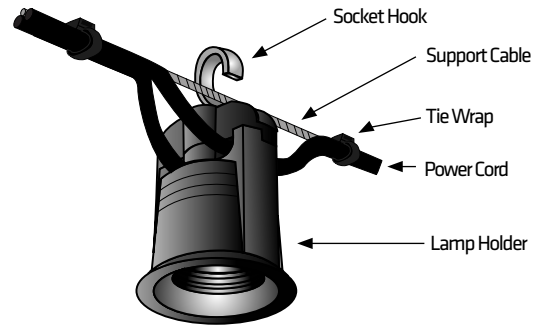
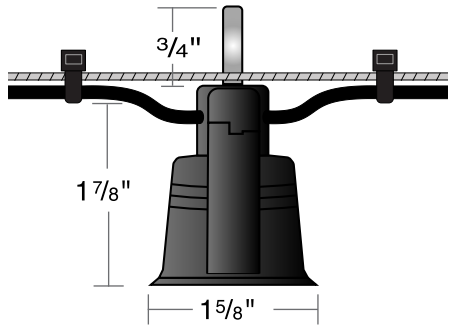
Decostring system is ETL listed for permanent wet/damp/dry installations, ensuring durability in any environment. Proudly made in the USA.

SERIES	SPACING	LAMP	SHADE STYLE	SHADE FINISH	QTY / LENGTH	MOUNTING KITS
DSW WET / DAMP / DRY	12 12" O/C 18 18" O/C 24 24" O/C 36 36" O/C 48 48" O/C 60 60" O/C CUSTOM (SPECIFY)	SELECT FROM LAMPS PAGE	OPTIONAL SELECT FROM SHADE PAGES	SELECT FROM SHADE PAGES	MUST PROVIDE QUANTITY AND LENGTH OF RUNS	OPTIONAL SMK STANDARD MOUNTING KIT (For drooped suspensions) TMK TURNBUCKLE MOUNTING KIT (For tensioned suspensions) QL QUICK LINK (For Intermediate points)
Refer to PG. 1,2	Refer to PG. 2	Refer to PG. 3	Refer to PG. 4, 5, 6, 7	Refer to PG. 6, 7	Refer to PG. 8	Refer to PG. 9



DECOSTRING (DSW) SERIES

SPECIFICATIONS



SPECIFICATIONS

- VOLTAGE** 120 volts system. No drivers or transformers required.
- LAMP HOLDER** Black phenolic, medium base, UL weatherproof socket with hook for optional mounting
- POWER CORD** 12/2 AWG. Black flexible wire, UV rated for outdoor use
- SUPPORT CABLE** 3/32" 7X7 Stainless steel support aircraft cable, 920 lbs test / 175 lbs working load. Larger cable size available
- TIE WRAP** Heavy duty, black UV rated tie wraps secure power cable to support cable
- LAMPS** LED, 120V, medium base, dimmable, wet rated. Silicone coated available, refer to page 3 for details & options.
- SHADES** Optional, shapes made out of aluminum, steel and acrylic, refer to page 4,5,6,7 for details and options
- SPACING** Standard socket spacing: 12" O/C, 18" O/C, 24" O/C, 36" O/C, 48" O/C, 60" O/C. Custom spacing available
- MAXIMUM RUNS** Product is rated for 20A, 125V, 2500W, the maximum run we recommend per NEC is 16A, 1920W max.
- DIMMING** Dimmable to less than 10% with Primus lamps and ELV trailing edge type dimmers
- MOUNTING KITS** Heavy duty stainless steel mounting hardware available, refer to page 9 for details and options.
- PROTECTION KIT** (SGK) silicone grease kit for socket and lamp extra protection against corrosion and seizing. (Included)
- COLD TESTING** ETL cold weather tested to minus 40 degrees C, per IEC 60068-2-1 standards.
- PHOTOMETRY** ETL tested with bare & shielded lamp. BUG rating: B0-U0-G0 when using DSC7 (7" cone shade)
- WEIGHT/FT** The weight per foot includes: socket, power wire, support cable, tie wraps and lamp

12" O/C	18" O/C	24" O/C	36" O/C	48" O/C	60" O/C
0.24 lbs / ft	0.21 lbs / ft	0.20 lbs / ft	0.19 lbs / ft	0.17 lbs / ft	0.15 lbs / ft

- WARRANTY** Lamps - 3 year limited warranty, see [Warranty](#) for full terms.
Decostring system - 5 year limited warranty, see [Warranty](#) for full terms.

COMPLIANCE CERTIFICATIONS



DECOSTRING (DSW) SERIES

LAMPS - 120V OUTDOOR WET RATED



Lamps below are included. Consult factory for a different lamp shape, wattage, lumens, color or any other special requirements.



G16.5

3.5W
350L



A19

7.0W
800L



G25

4.5W
360L



G40

4.5W
500L

PART NO.	DESCRIPTION
G16.5/C/24/350	24K, CLEAR
G16.5/C/27/350	27K, CLEAR
G16.5/W/27/350	27K, WHITE

200L Available Consult Factory

PART NO.	DESCRIPTION
A19/C/30/800	30K, CLEAR
A19/W/30/800	30K, WHITE

PART NO.	DESCRIPTION
G25/C/27/360	27K, CLEAR
G25/W/27/360	27K, WHITE

PART NO.	DESCRIPTION
G40/C/27/500	27K, CLEAR
G40/W/27/500	27K, WHITE



S14

1.5W
150L



S14

1W
100L
STATIC COLORS

PART NO.	DESCRIPTION
S14/C/24/150	24K, CLEAR
S14/C/27/150	27K, CLEAR
S14/W/24/150	24K, WHITE

100L Available Consult Factory

PART NO.	DESCRIPTION
S14B	STATIC BLUE
S14Y	STATIC YELLOW
S14R	STATIC RED
S14G	STATIC GREEN



ST19

4.5W
360L
VINTAGE



A19

4.5W
360L
VINTAGE



G25

3.5W
350L
VINTAGE



G40

4.5W
360L
VINTAGE

PART NO.	DESCRIPTION
ST19/A/22/360	22K, AMBER

PART NO.	DESCRIPTION
A19/A/22/360	22K, AMBER

PART NO.	DESCRIPTION
G25/A/22/350	22K, AMBER

PART NO.	DESCRIPTION
G40/A/22/360	22K, AMBER

The above lamps dim to off using ELV/TE trailing edge type dimmers.

*Add "SC" at the end of the part number for silicone coated finish example: S14/C/24/150/SC

*The actual finish color of the silicon-coated lamps may vary, resulting in the clear lamps having a frosted appearance.

DECOSTRING (DSW) SERIES

METAL SHADES



Decostring metal shades are hand crafted, aluminum or steel and feature powder coat finishes. Most metal shades are shipped separately and easily installed in the field using our gasket ring to secure them to the socket. All shades dimensions are nominal. Custom designs, sizes, and finishes are available, consult factory.

CONE

C7	(FINISH)	7" W X 3" H	0.38 lbs
C10	(FINISH)	10" W X 3" H	0.57 lbs
C12	(FINISH)	12" W X 4" H	1.13 lbs

Aluminum
Field Installed
Provides 0/0/0 BUG RATING



Shown: Dark Bronze

HAT

H4	(FINISH)	4" W X 1 7/8" H	0.13 lbs
H6	(FINISH)	6" W X 2 1/4" H	0.25 lbs
H8	(FINISH)	8" W X 2 3/4" H	0.38 lbs

Aluminum
Factory Installed



Shown: Verde Bronze

RADIAL WAVE

RW4	(FINISH)	4" W X 1 7/8" H	0.13 lbs
RW6	(FINISH)	6" W X 2 1/4" H	0.25 lbs
RW8	(FINISH)	8" W X 2 3/4" H	0.38 lbs

Aluminum
Factory Installed



Shown: Black

PERFORATED TUBE

PT4/6	(FINISH)	4" W X 6" H	0.70 lbs
PT6/8	(FINISH)	6" W X 8" H	1.38 lbs

Aluminum
Field Installed



Shown: Custom Color

PERFORATED TUBE WITH TOP DISC

PTD	(FINISH)	4" W X 8" H With 10" Top Disc	1.13 lbs
------------	----------	----------------------------------	----------

Aluminum
Field Installed
Consult factory for other sizes.



Shown: Dark Bronze

DECOSTRING (DSW) SERIES

METAL SHADES



ATOM CAGE

AC7 (FINISH) 7" Diameter 0.35 lbs
 Steel
 Factory Installed



Shown: Black

TUBE CAGE

TC4/6 (FINISH) 4" W X 6" H 0.57 lbs
TC6/8 (FINISH) 6" W X 8" H 0.94 lbs
 Aluminum
 Field Installed



Shown: Dark Bronze

ROUND CAGE

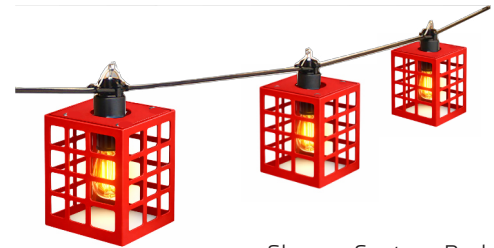
RC (FINISH) 8" W X 9" H 0.95 lbs
 Steel
 Field Installed



Shown: Custom Color

SQUARE CAGE

SC5/6 (FINISH) 5 1/2" W X 6 1/2" H 0.29 lbs
SC9/10 (FINISH) 9 1/2" W X 10 1/2" H 0.35 lbs
 Aluminum
 Field Installed



Shown: Custom Red

OPEN WIRE GUARD

OWG (FINISH) 5 1/2" W X 7 1/2" H 0.39 lbs
 Steel
 Factory or field installed
 Yellow, silver and black are standard finishes



Shown: Yellow

ENCLOSED WIRE GUARD

EWG (FINISH) 3 3/4" W X 5 1/2" H 0.16 lbs
 Steel
 Factory Installed
 Can be used with Cone and Dome shades.



Shown: Black

DECOSTRING (DSW) SERIES

METAL SHADES - FINISHES



ROUND SHADE WITH/GUARD

RG (FINISH) 6" W X 5 1/8" H 0.57 lbs
 Aluminum
 Factory Installed
 Delete "G" for no guard
 Consult factory for other sizes



Shown: Custom Textured Bronze

PERFORATED SPHERE

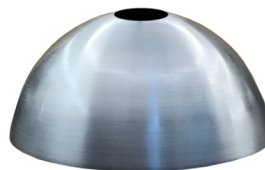
PS6 (FINISH) 6" Diameter 0.48 lbs
PS8 (FINISH) 8" Diameter 0.70 lbs
 Aluminum
 Field Installed



Shown: Black and Orange Interior

DOME

D7 (FINISH) 7" W X 3" H 0.48 lbs
D10 (FINISH) 10" W X 4.5" H 0.67 lbs
 Aluminum
 Field Installed
 Provides 0/0/0 BUG RATING



Shown: Custom

CUSTOM SHADES

Available, provide your design or consult factory.
 All metal shades can be made in other sizes, consult factory.

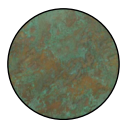


METAL SHADES FINISH OPTIONS

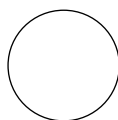
All finish options shown below are in powder coat finishes.
 Custom powder coat finishes are also available, provide RAL#
 The actual color of the product may vary from what is seen on electronic devices.
 We cannot guarantee that the color you see on your screen accurately reflects the true color of the product.



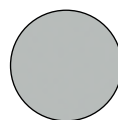
DB - DARK BRONZE
 Standard
 (Powder coat)



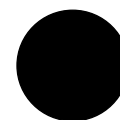
VB - VERDE BRONZE
 Standard
 (Powder coat)



W - WHITE
 Standard
 (Powder coat)



S - SATIN
 Standard
 (Powder coat)



B - BLACK
 Standard
 (Powder coat)



C - CUSTOM COLOR
 Premium
 (Powder coat [Provide RAL#](#))

DECOSTRING (DSW) SERIES

ACRYLIC SHADES - FINISHES



Decostring plastic shades are made out acrylic for indoor and outdoor use.

All plastic shades are shipped separately and easily attached in the field using our gasket ring to secure them to the socket.

All shades dimensions are nominal.

Custom designs, sizes, and finishes are available, consult factory.

ACRYLIC SPHERE

AS8	(FINISH)	8" Diameter	0.57 lbs
AS10	(FINISH)	10" Diameter	1.00 lbs
AS12	(FINISH)	12" Diameter	1.34 lbs

Acrylic
Field Installed
All finish options available



Shown: White Acrylic

ACRYLIC DOME

AD8	(FINISH)	8" W X 4" H	0.37 lbs
AD10	(FINISH)	10" W X 5" H	0.65 lbs
AD12	(FINISH)	12" W X 6" H	0.95 lbs

Acrylic
Field Installed
All finish options available



Shown: White Acrylic

ACRYLIC TUBE

AT4/6	(FINISH)	4" W X 6" H	0.55 lbs
AT6/8	(FINISH)	6" W X 8" H	0.88 lbs

Acrylic
Field Installed
White finish. Consult factory for other finishes.



Shown: White Acrylic

ACRYLIC SHADES FINISH OPTIONS

Standard finishes are clear, white and frosted.

The actual color of the product may vary from what is seen on electronic devices.

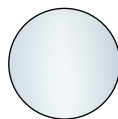
We cannot guarantee that the color you see on your screen accurately reflects the true color of the product.



C - CLEAR
Standard



W - WHITE
Standard



F - FROSTED
Standard



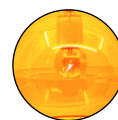
R - RED
Premium



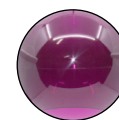
B - BLUE
Premium



G - GREEN
Premium



Y - YELLOW
Premium



P - PURPLE
Premium



O - ORANGE
Premium

DECOSTRING (DSW) SERIES

RUN LENGTH - TYPICAL RUN LAYOUTS

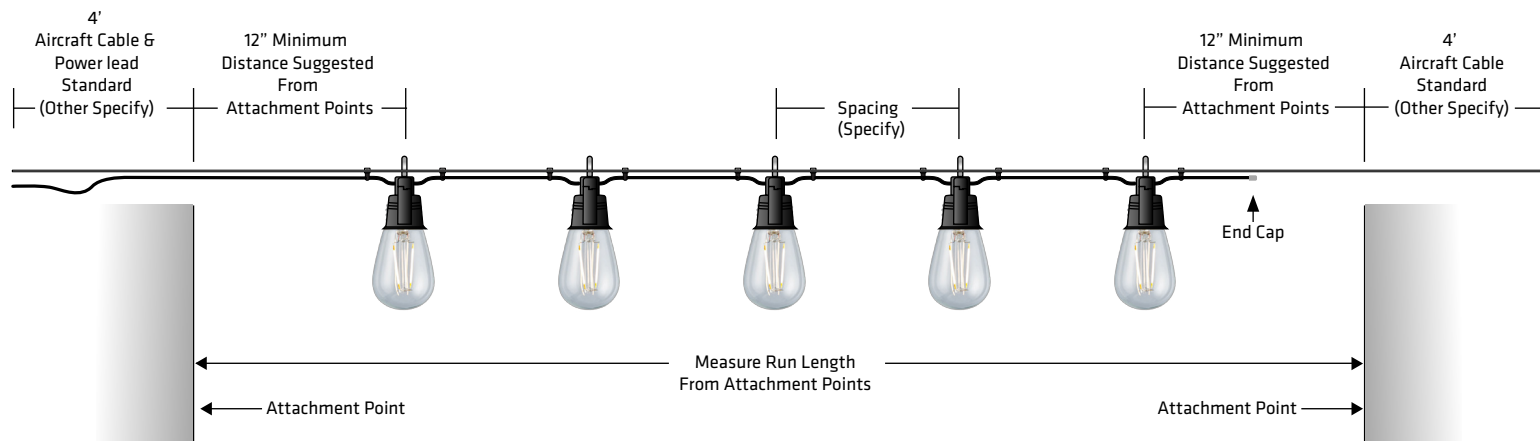


RUN LENGTH DETAILS

When ordering, must provide runs quantity and runs length.

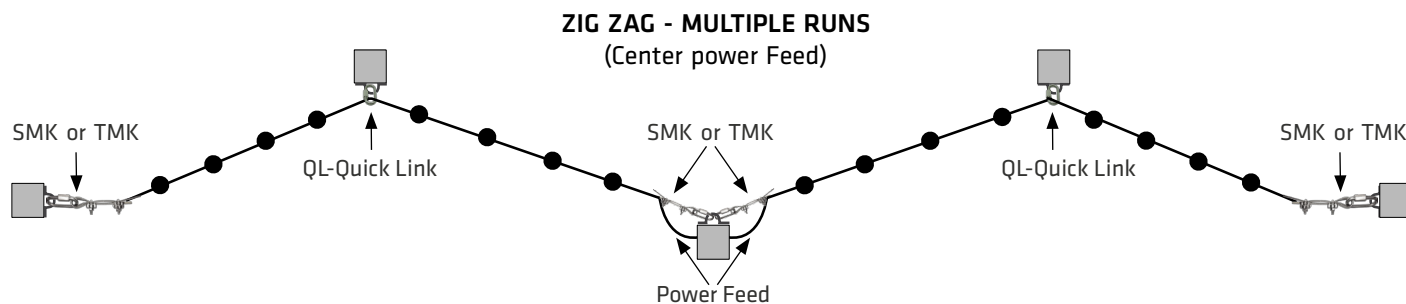
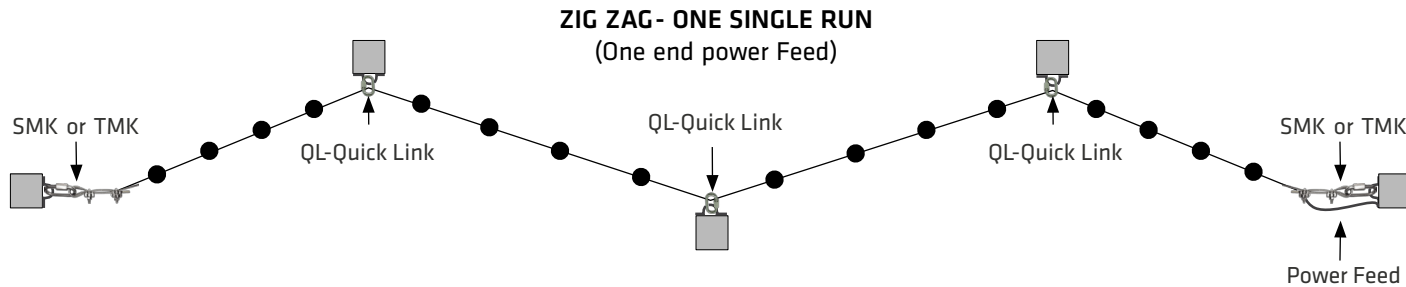
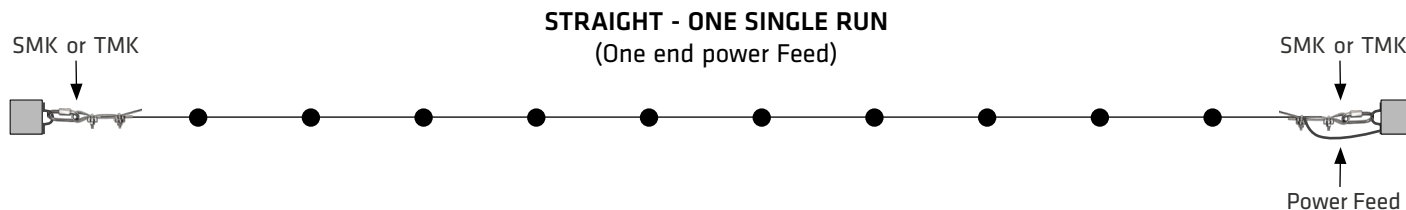
Decostrings are custom-ordered and built to specific run lengths and socket lamp spacing.

Each run length comes with a standard 4' power lead on one end, along with 4' support cable tails on both ends for suspension and adjustment, for both tensioned and drooping installations. See illustration below for more details.



TYPICAL RUN LAYOUTS (TOP VIEW)

The Illustrations below are examples of the most common run layouts.



DECOSTRING (DSW) SERIES

MOUNTING KITS



(SMK) - STANDARD MOUNTING KIT (FOR DROOPED SUSPENSIONS)

Standard mounting kit includes stainless steel hardware for both ends of the run:

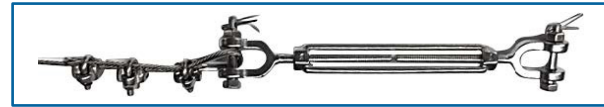
- (2) - 1/4" Quick links 5/16" gate opening
- (2) - 3/32" thimbles
- (4) - 3/32" Cable clamps



(TMK) - TURNBUCKLE MOUNTING KIT (FOR TENSIONED SUSPENSIONS)

Turnbuckle mounting kit includes stainless steel hardware for both ends of the run:

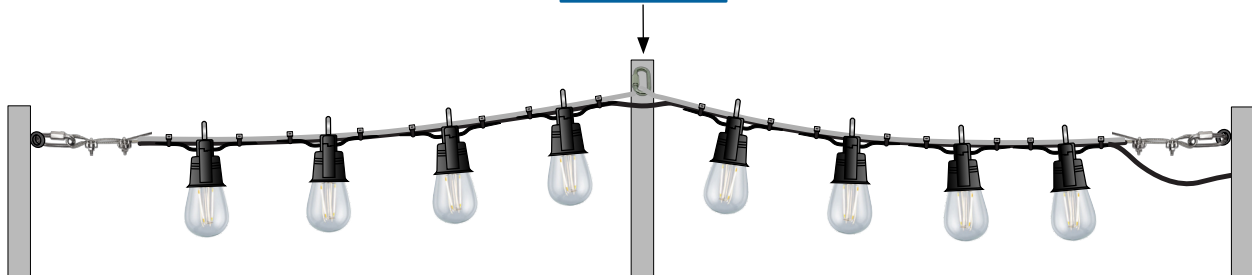
- (2) - 1/4" Jaw style turnbuckles, 7/16" gate opening
- (2) - 3/32" Thimbles
- (6) - 3/32" Cable clamps



(QL) - QUICK LINK (FOR INTERMEDIATE POINTS)

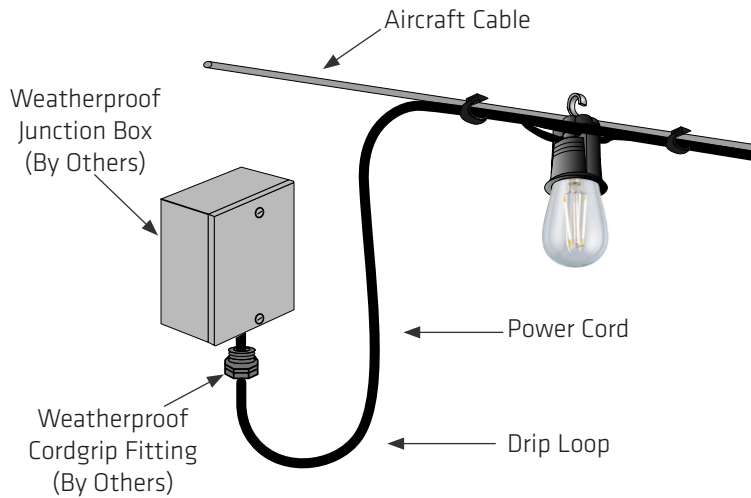
Quick link includes stainless steel hardware for intermediate points on continuous zig-zag or pattern runs:

- (1) - 1/4" Quick link 5/16" gate opening. Larger available.

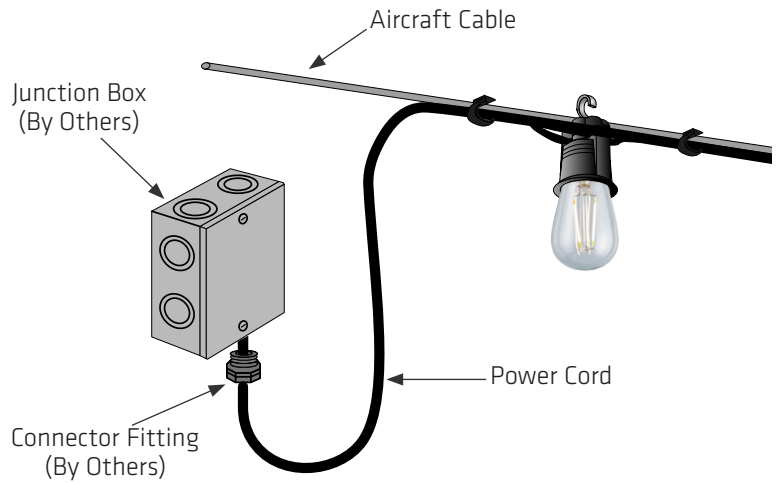


Decostrings are designed and listed for dry, damp, wet location and permanent installation. Electrical connections must be done by a qualified electrician and according to local and NEC requirements. Below are some options and details of customary installations. All electrical hardware required for the installation by others.

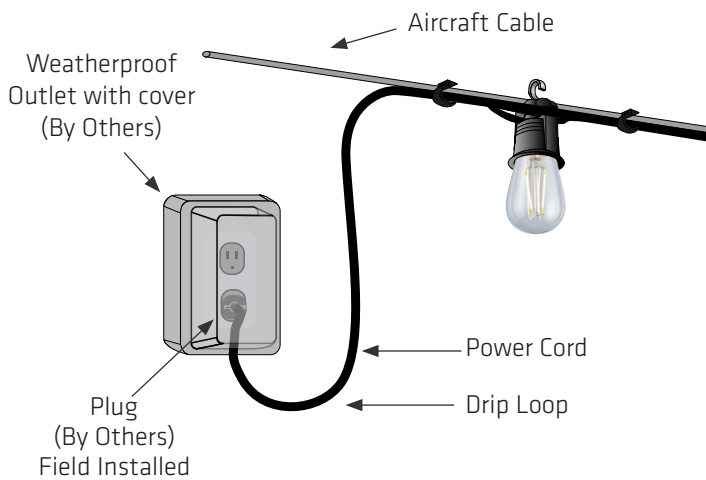
HARDWIRE / WET LOCATION



HARDWIRE / DRY, DAMP LOCATION

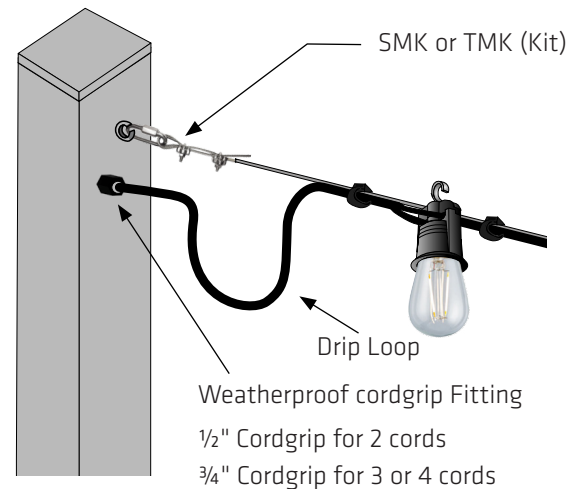


POWER PLUG / DRY & WET LOCATION



Power plug, must connect to a weatherproof outlet with cover. GFCI not recommended due to false tripping.

POLE HARDWIRE / WET LOCATION

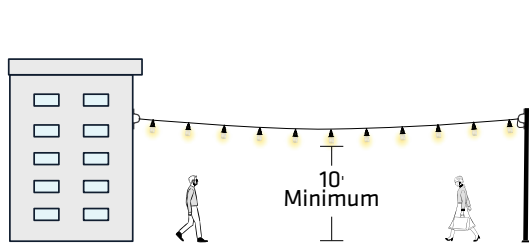


Pole connection can include a cord grip at the top /side of the pole with wiring connections protected under the pole cap.

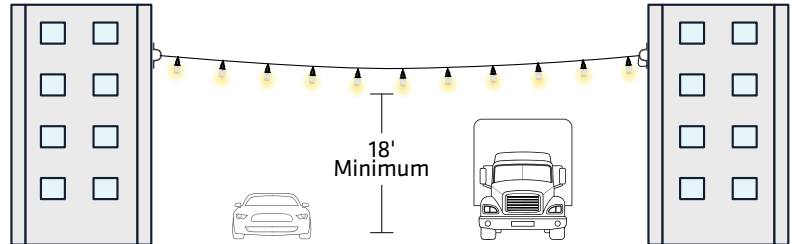
(AFG) - ABOVE FINISH GRADE (HEIGHT MINIMUM REQUIREMENTS)

See illustrations below for AFG-Above finish grade, NEC (225-18) minimum height requirements. Other local codes may have different height requirements.

PEDESTRIAN



VEHICULAR



VERSATILE APPLICATIONS

The illustrations below demonstrate just a few of the countless ways Decostrings can be used and applied.

BUILDING TO BUILDING



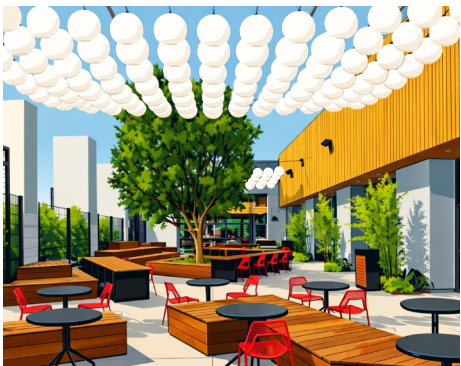
POLE TO POLE



BUILDING TO POLE



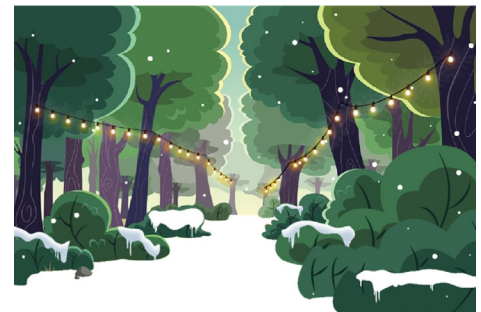
CUSTOM



INDOORS



EXTREME COLD WEATHER

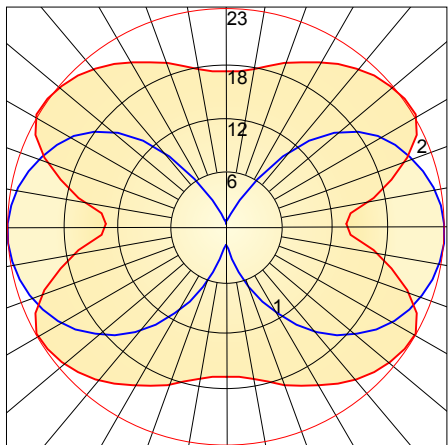


DECOSTRING (DSW) SERIES

PHOTOMETRICS / BUG RATINGS

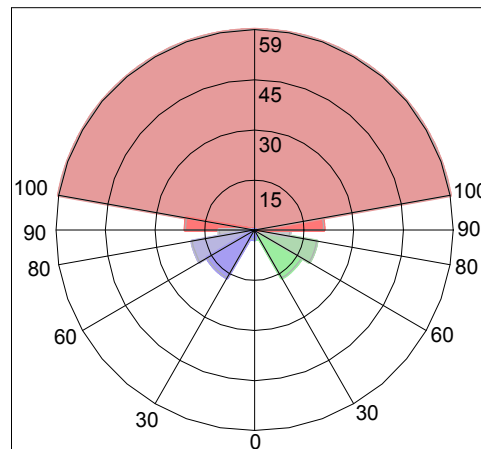


BARE LAMP (S14/1.5W/27K/150L)



PHOTOMETRICS

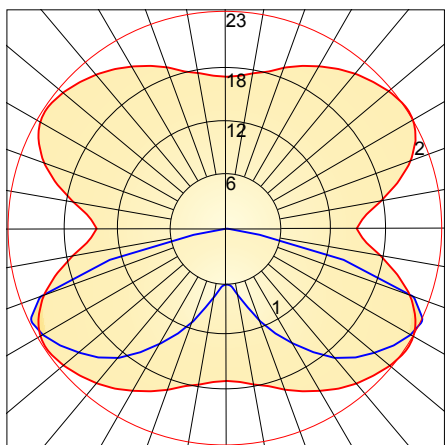
Maximum Candela = 23.392 Located At Horizontal Angle = 30, Vertical Angle = 85
 # 1 - Vertical Plane Through Horizontal Angles (30 - 210) (Through Max. Cd.)
 # 2 - Horizontal Cone Through Vertical Angle (85) (Through Max. Cd.)



BUG RATING (B0-U3-G1)

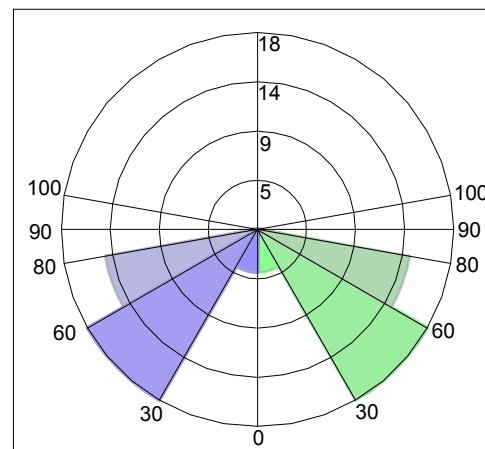
Luminaire Lumens:
 Front: Low=2.7, Medium=16.3, High=18.9, Very High=10.5
 Back: Low=2.7, Medium=16.3, High=18.9, Very High=10.5
 Uplight: Low=20.6, High=59.4

LAMP WITH 7" CONE SHADE (S14/1.5W/27K/150L)



PHOTOMETRICS

Maximum Candela = 22.135 Located At Horizontal Angle = 30, Vertical Angle = 65
 # 1 - Vertical Plane Through Horizontal Angles (30 - 210) (Through Max. Cd.)
 # 2 - Horizontal Cone Through Vertical Angle (65) (Through Max. Cd.)



BUG RATING (B0-U0-G0)
(Dark Sky Compliant)

Luminaire Lumens:
 Front: Low=3.9, Medium=18.2, High=14.3, Very High=0.5
 Back: Low=3.9, Medium=18.2, High=14.3, Very High=0.5
 Uplight:

LAMP CONVERSION CHART TO RATIO IES PHOTOMETRY

LAMP	WATTS	LUMENS MULTIPLIER
S14 27K	1.5	150
G16.5 27K	2.0	200
G16.5 27K	3.5	325
A15 27K	4.5	500
ST19 22K	3.5	300