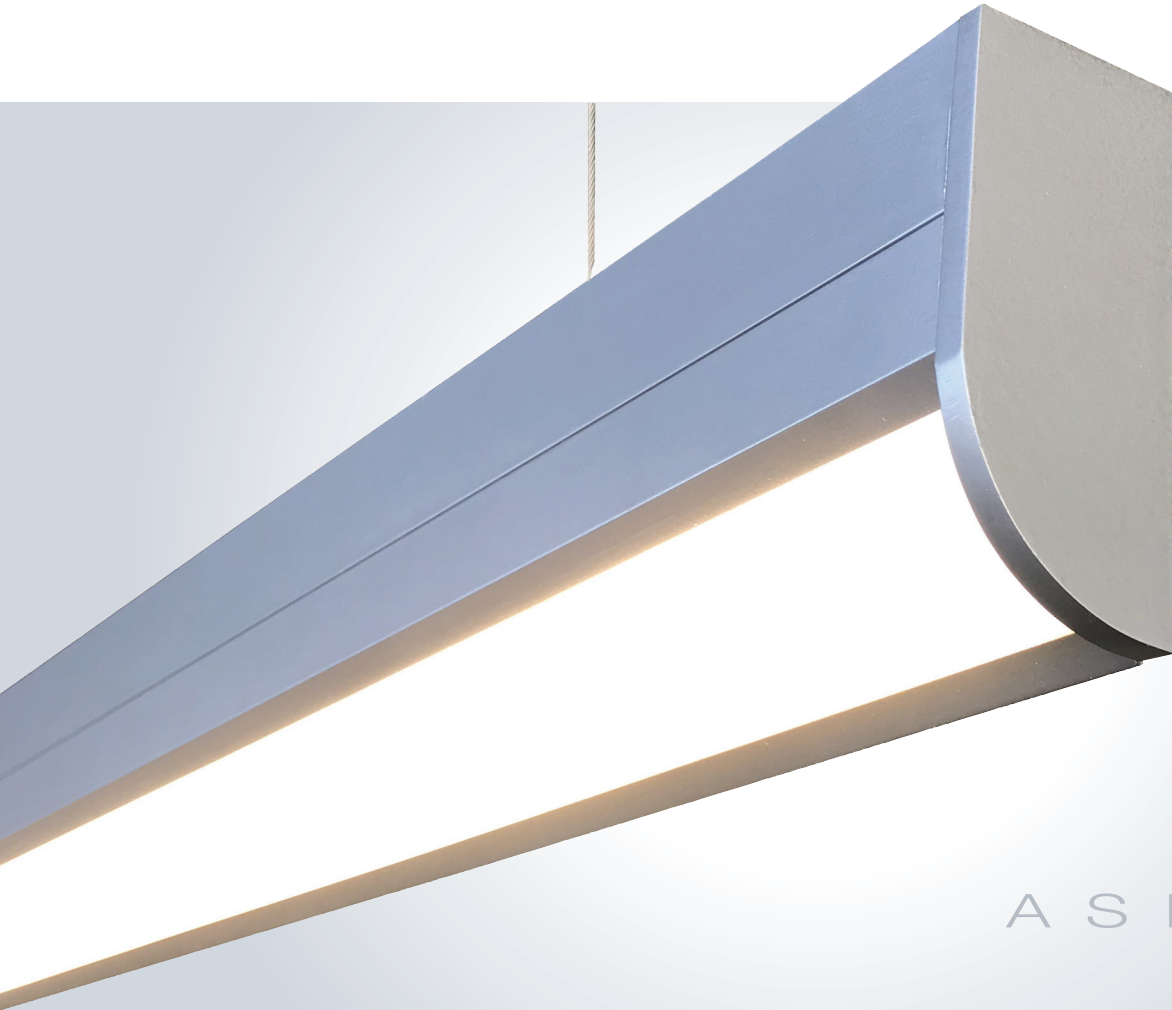


A S E N T O



A S E N T O 1



SPECIFICATIONS

DESCRIPTION

Asento asymmetric fixtures are specifically designed to illuminate a flat surface from an edge. Featuring a 45° angle.

FINISH

Satin anodized or white paint finish standard. Custom finish optional.

LED DRIVER

Osram integral, universal voltage; 0-10V 10% dimming std.; 1% dimming opt., custom programmable.

LED's

60,000 hours. (L70), High uniformity, 85 CRI, by Nichia and Cree, LED Boards by Osram. 27K, 3K, 35K 4K

CERTIFICATION

ETL/CSA listed for damp locations. LM79



2001431 MADE IN THE USA

HOUSING

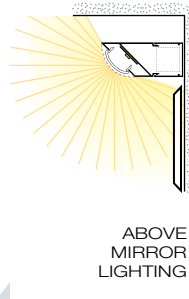
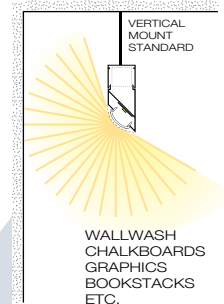
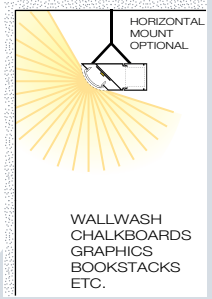
Extruded aluminum housing up to 12' long. Continuous runs available. No visible hardware

LENS

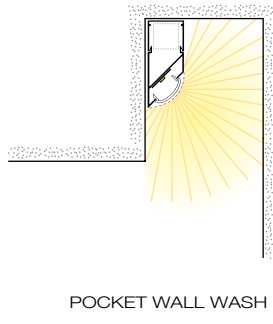
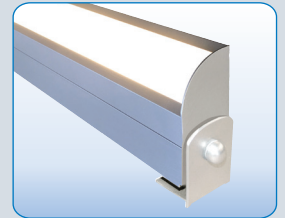
Extruded DR acrylic, snap-on frosted widespread lens, smooth uniformity, no pixelization.

MOUNTING

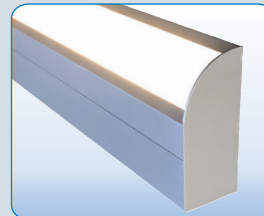
Cable Suspended and Surface Mount



ADJUSTABLE MOUNT



STANDARD ENDCAP



ARCHITECTURAL ENDCAP

