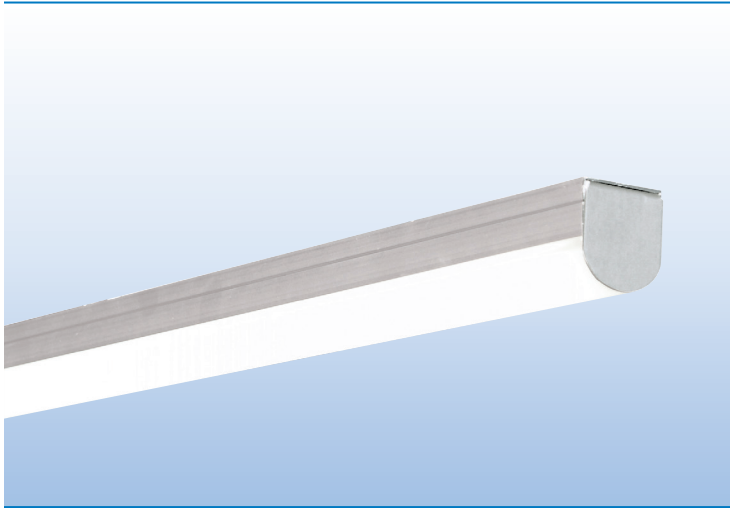
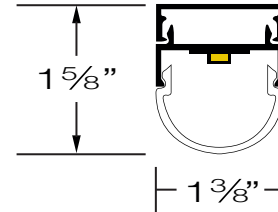


## MINIATURE PROFILE / HIGH PERFORMANCE / REMOTE DRIVER





PROJECT:

TYPE:



### SPECIFICATIONS

HOUSING	Extruded aluminum housing up to 12' long. Continuous runs available.
FINISH	Satin anodized or white paint finish standard. Custom finish optional.
LENS	Extruded DR acrylic, snap-on frosted widespread lens.
LED DRIVER	Remote, universal voltage; 0-10V dimming standard; 1% or 10% dimming.
MOUNTING	SURFACE MOUNT: Mounting holes pre-drilled. See page 2 for details. CABLE SUSPENDED: Aircraft cable suspension kit (SK), canopy and prewired with 18/5 SVT cord.
LED's	60,000 hours. (L70), High uniformity, 80 CRI
CERTIFICATION	ETL/CSA listed for damp locations.  2001431  MADE IN THE USA

### LED COLOR & LUMEN OPTIONS

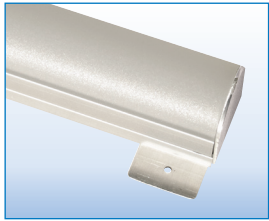
4' – 24" BOARDS		LUMENS PER FOOT – WATTS PER FOOT – LUMENS PER WATT								
LED COLOR	CRI	LOW			MEDIUM			HIGH		
WHITE 2700K	80	500 L/FT	3.5 W/FT	136 L/W	870 L/FT	6.5 W/FT	130 L/W	1160 L/FT	9.0 W/FT	127 L/W
WHITE 3000K	80	530 L/FT	3.5 W/FT	144 L/W	915 L/FT	6.5 W/FT	137 L/W	1220 L/FT	9.0 W/FT	133 L/W
WHITE 3500K	80	535 L/FT	3.5 W/FT	144 L/W	920 L/FT	6.5 W/FT	137 L/W	1225 L/FT	9.0 W/FT	133 L/W
WHITE 4000K	80	560 L/FT	3.5 W/FT	151 L/W	970 L/FT	6.5 W/FT	145 L/W	1290 L/FT	9.0 W/FT	140 L/W

Higher lumen packages available.

### PART NUMBER

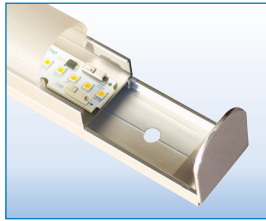
SERIES	LUMENS	COLOR	MOUNTING	FEED	FINISH	LENGTH
ALX5-RLR	L LOW	27K 2700K	<u>SURFACE MOUNT</u>	<u>SURFACE MOUNT</u>	S SATIN	2' 8'
	M MEDIUM	3K 3000K	TM TAB MOUNT	EL END LEAD WIRE	W WHITE	3' 9'
	H HIGH	35K 3500K	IM INSIDE MOUNT	TEL TOP END LEAD WIRE	C CUSTOM	4' 10'
	CP CUSTOM PROGRAMMED (Specify Lumens/FT or Watts/FT)	4K 4000K	DFT TAPE MOUNT	BEL BACK END LEAD WIRE		5' 11'
			JBP J BOX PLATE	BCL BACK CENTER LEAD WIRE (5' LEAD STANDARD)		6' 12'
			<u>CABLE SUSPENDED</u>			7'
			SK36 36" CABLE KIT			
			SK48 48" CABLE KIT			
			SK72 72" CABLE KIT			

## SURFACE MOUNTING OPTIONS



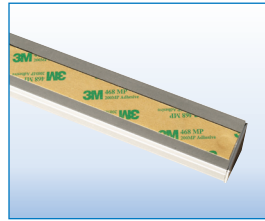
**TM – TAB MOUNT**

Mounting Tab at Both Ends  
(Screws by Others)



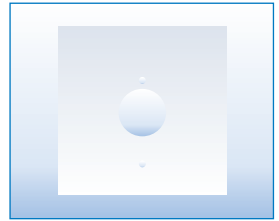
**IM – INSIDE SCREW MOUNT**

1/4" Inside Mounting Holes  
(Screws by Others)



**DFT – TAPE MOUNT**

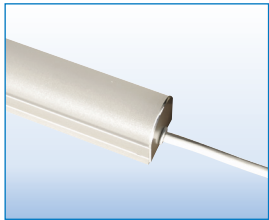
3M Double Face Tape



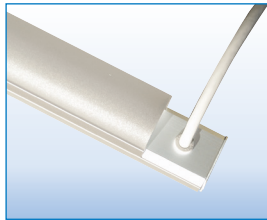
**J-BOX PLATE**

**JBP** 5" FLAT CANOPY  
PLATE TO COVER  
J-BOX

## SURFACE MOUNTING FEED OPTIONS



**EL – END LEAD WIRE**



**TEL – TOP END LEAD WIRE**

This Option Adds  
2" to Fixture Length



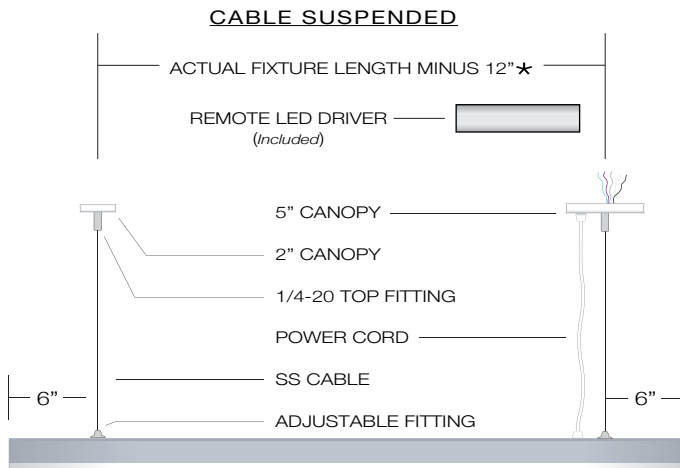
**BEL – BACK END LEAD WIRE**



**BCL – BACK CENTER LEAD WIRE**

10', 11' and 12' lengths  
require a center suspension  
point or fixture will sag.

## CABLE SUSPENDED MOUNTING OPTIONS



**SK36** 36" Suspension Kit  
**SK48** 48" Suspension Kit  
**SK72** 72" Suspension Kit  
Other cable lengths available.

Suspension Kit includes:  
(2) Top Fittings for 1/4-20 Rod  
(2) Adjustable Bottom Fittings  
(2) Aircraft Cables  
(1) Prewired 18/5 White SVT Cord  
(1) 5" White Canopy with Mounting Hardware  
(1) 2" White Canopy

★Custom pendant spacing available; consult factory

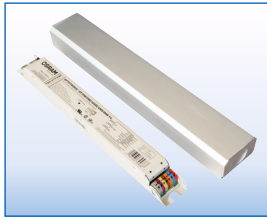
★Lengths over 8' require center cable support

★EM option includes 18/6 cord

## FIXTURE LENGTHS

NOMINAL LENGTH	2'	3'	4'	5'	6'	7'	8'	9'	10'	11'	12'
ACTUAL LENGTH	23"	34"	49"	56"	73"	89"	97"	111"	121"	133"	145"

## REMOTE LED DRIVERS WITH ENCLOSURE *(Included)* Universal Voltage (120/277) 0–10V Dimming



### ENCLOSURE DIMENSIONS

16" X 2" x 1 1/4"

16" X 2" x 1 1/4"

28" X 2" x 1 1/4" (ENCLOSURE W/ TWO DRIVERS)

18" X 2" x 1 1/4"

34" X 2" x 1 1/4" (ENCLOSURE W/ TWO DRIVERS)

### WATTS

1 – 30W

1 – 50W

2 – 50W

1 – 85W

2 – 85W

20' Max Remote Driver Distance

The chart below shows watts / fixture and driver requirements.

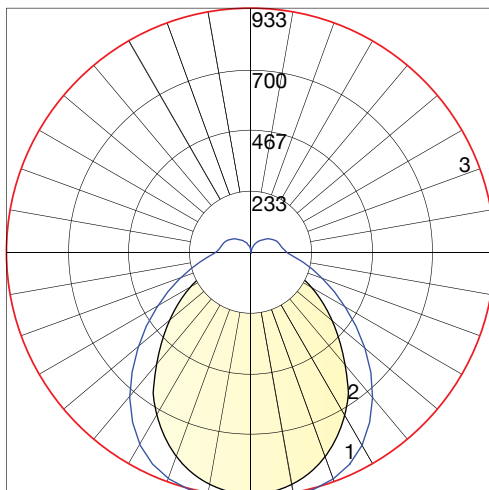
Some medium and high lumen fixtures require more than one driver; Refer to chart below.

FIXTURE LENGTH	1'	2'	3'	4'	5'	6'	7'	8'	9'	10'	11'	12'
LOW LUMENS	3.9W	8W	12W	16W	20W	24W	28W	32W	36W	39W	43W	47W
DRIVER REQUIRED	30W	30W	30W	30W	30W	30W	30W	50W	50W	50W	50W	50W
MEDIUM LUMENS	7.9W	16W	24W	32W	40W	48W	56W	64W	72W	79W	87W	95W
DRIVER REQUIRED	30W	30W	30W	50W	50W	50W	85W	85W	85W	85W	(2) 50W	(2) 50W
HIGH LUMENS	11.5W	23W	35W	46W	58W	69W	81W	92W	104W	115W	127W	138W
DRIVER REQUIRED	30W	30W	50W	50W	85W	85W	85W	(2) 50W	(2) 85W	(2) 85W	(2) 85W	(2) 85W

Some low wattage fixtures can be grouped on a single driver.

The number of fixtures connected to a single driver must not exceed driver max wattage ratings.

## PHOTOMETRICS



**POLAR GRAPH**  
FILE NAME: L011501401.IES  
Maximum Candela = 432 (Low Lumens)