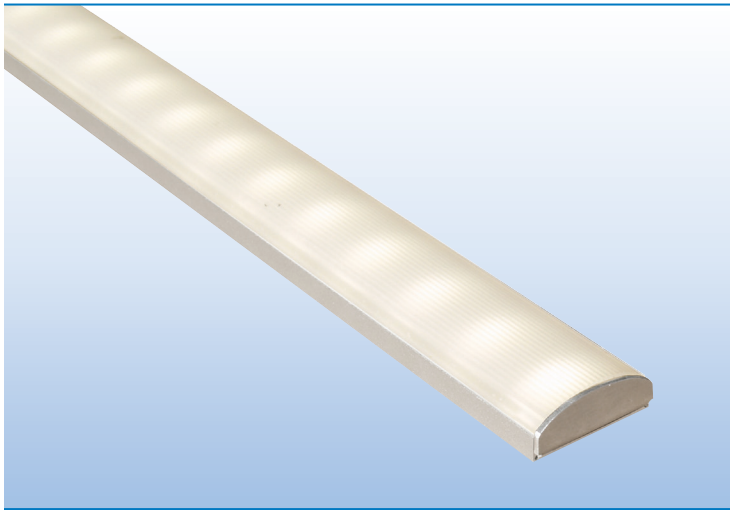
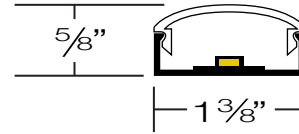


DISPLAY / UNDERCABINET / TASK / INDIRECT / ACCENT





PROJECT:

TYPE:



SPECIFICATIONS

HOUSING	Extruded aluminum housing. Continuous runs available.
FINISH	Satin anodized or white paint finish standard. Custom finish optional.
LENS	Extruded DR acrylic, snap-on frosted widespread lens.
LED DRIVER	Remote, universal voltage; 0-10V dimming standard; custom programmable. (Order Separately)
MOUNTING	Surface Mount; See page 2 for options and details.
LED's	60,000 hours. (L70), High uniformity, 80 CRI
CERTIFICATION	ETL/CSA listed for damp locations.  2001431  MADE IN THE USA

LED COLOR & LUMEN OPTIONS

4' – 24" BOARDS		LUMENS PER FOOT – WATTS PER FOOT – LUMENS PER WATT								
LED COLOR	CRI	LOW			MEDIUM			HIGH		
WHITE 2700K	80	500 L/FT	3.5 W/FT	136 L/W	870 L/FT	6.5 W/FT	130 L/W	1160 L/FT	9.0 W/FT	127 L/W
WHITE 3000K	80	530 L/FT	3.5 W/FT	144 L/W	915 L/FT	6.5 W/FT	137 L/W	1220 L/FT	9.0 W/FT	133 L/W
WHITE 3500K	80	535 L/FT	3.5 W/FT	144 L/W	920 L/FT	6.5 W/FT	137 L/W	1225 L/FT	9.0 W/FT	133 L/W
WHITE 4000K	80	560 L/FT	3.5 W/FT	151 L/W	970 L/FT	6.5 W/FT	145 L/W	1290 L/FT	9.0 W/FT	140 L/W

Higher lumen packages available.

FIXTURE LENGTHS

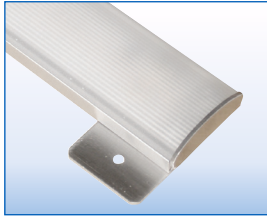
NOMINAL LENGTH	1'	2'	3'	4'	5'	6'	7'	8'
ACTUAL LENGTH	13"	24"	35"	46"	60"	73"	84"	97"

See next page for fixture wattage; Consult factory for fixtures longer than 8'

PART NUMBER

SERIES	LUMENS	COLOR	LED DRIVER	MOUNTING	FINISH	LENGTH
ALX4-HP	L LOW	27K 2700K	R REMOTE	TM TAB MOUNT	S SATIN	1' 5'
	M MEDIUM	3K 3000K	* ORDER SEPARATELY SEE NEXT PAGE FOR OPTIONS	IM INSIDE MOUNT	W WHITE	2' 6'
	H HIGH	35K 3500K		DFT TAPE MOUNT	C CUSTOM	3' 7'
	CP CUSTOM PROGRAMMED (Specify Lumens/FT or Watts/FT)	4K 4000K				4' 8'

MOUNTING OPTIONS & LEAD WIRES



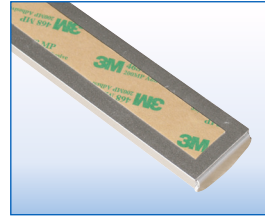
TM – TAB MOUNT

Mounting Tab at Both Ends
(Screws by Others)



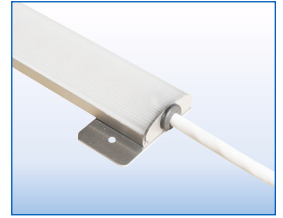
IM – INSIDE SCREW MOUNT

1/4" Inside Mounting Holes
(Screws by Others)



DFT – TAPE MOUNT

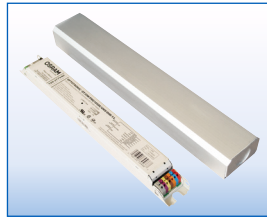
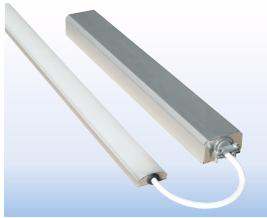
3M Double Face Tape



3' LEAD WIRE STANDARD

Right Side Lead Wire for
TM – Tab Mounting
(See Picture Above)
Specify if longer than
3' is required.

REMOTE LED DRIVERS WITH ENCLOSURE Universal Voltage (120/277) 0–10V Dimming



PART NO.

PL-LD - 20W

20W

DIMENSIONS

12" X 2" x 1 1/4"

PL-LD - 30W

30W

12" X 2" x 1 1/4"

PL-LD - 50W

50W

12" X 2" x 1 1/4"

PL-LD - 80W

80W

16" X 2" x 1 1/4"

Fixtures can be grouped on a single driver.

The number of fixtures X watts/fixture = total watts to choose the correct driver(s).

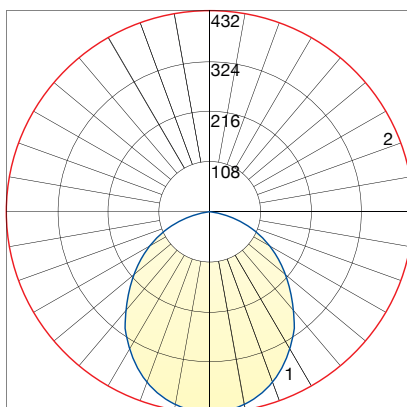
The number of fixtures connected to a single driver must not exceed driver max wattage ratings; Refer to chart below.

20' Max Remote Driver Distance

WATTS PER FIXTURE

LUMENS	1' FIXTURE	2' FIXTURE	3' FIXTURE	4' FIXTURE	5' FIXTURE	6' FIXTURE	7' FIXTURE	8' FIXTURE
LOW	3.5W	7W	10.5W	14W	17.5W	21W	24.5W	28W
MEDIUM	6.5W	13W	19.5W	26W	32.5W	39W	45.5W	52W
HIGH	9W	18W	27W	36W	45W	54W	63W	72W

PHOTOMETRICS



POLAR GRAPH

FILE NAME: L10137801R01.IES
Maximum Candela = 432 (Low Lumens)

SPECIFICATIONS ARE SUBJECT TO CHANGE DUE TO CONTINUOUS ADVANCES IN TECHNOLOGY
© PRIMUS LIGHTING, INC. ALL RIGHTS RESERVED