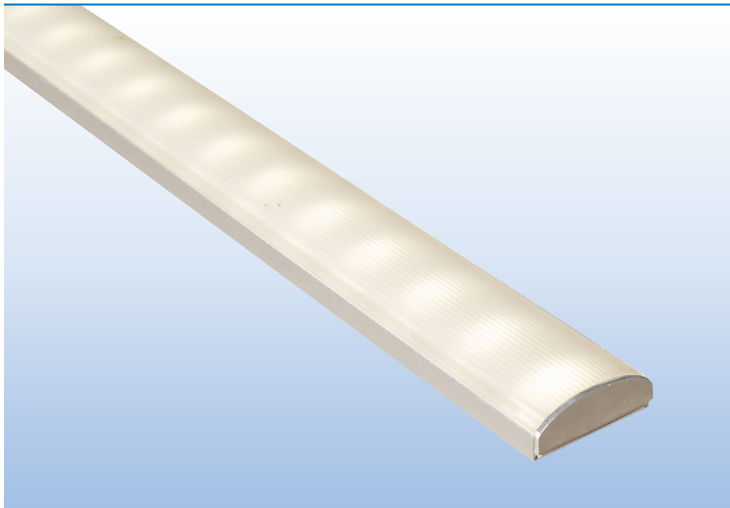
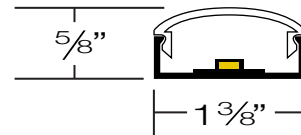


DISPLAY / UNDERCABINET / TASK / INDIRECT / ACCENT



PROJECT:
TYPE:



**SPECIFICATIONS**

<b>HOUSING</b>	Extruded aluminum housing. Continuous runs available.
<b>FINISH</b>	Satin anodized or white paint finish standard. Custom finish optional.
<b>LENS</b>	Extruded DR acrylic, snap-on frosted widespread lens.
<b>LED DRIVER</b>	Remote, Universal Voltage (120–277 / 12VDC) (Order Separately)
<b>MOUNTING</b>	Surface Mount; See page 2 for options and details.
<b>LED's</b>	LED Tape 50,000 Hours, 12VDC, dimmable.
<b>CERTIFICATION</b>	ETL/CSA listed for damp locations.  2001431  MADE IN THE USA

**LED COLORS – LUMENS – WATTS**

LED COLOR	LUMENS	WATTS
WHITE 2700K	152 / FT	2.6W / FT
WHITE 3000K	195 / FT	2.6W / FT
WHITE 3500K	198 / FT	2.6W / FT
WHITE 4200K	222 / FT	2.6W / FT

**FIXTURE LENGTHS**

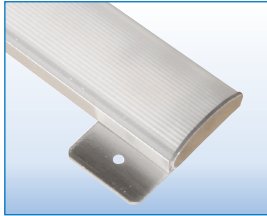
NOMINAL LENGTH	1'	2'	3'	4'	5'	6'	7'	8'	9'	10'	11'	12'
<b>ACTUAL LENGTH</b>	14"	26"	38"	50"	62"	74"	84"	98"	110"	122"	134"	146"
<b>TOTAL WATTS</b>	2.6W	5.2W	7.8W	10.4W	13W	15.6W	18.2W	20.8W	23.4W	26W	28.6W	31.2W

Consult factory for fixtures longer than 12' or custom fixture lengths.

**PART NUMBER**

SERIES	COLOR	LED DRIVER	MOUNTING	FINISH	LENGTH
ALX4-SP	27K 2700K 3K 3000K 35K 3500K 4K 4000K	R REMOTE * ORDER SEPARATELY SEE NEXT PAGE FOR OPTIONS	TM TAB MOUNT IM INSIDE MOUNT DFT TAPE MOUNT	S SATIN W WHITE C CUSTOM	1' 7' 2' 8' 3' 9' 4' 10' 5' 11' 6' 12' OTHER SPECIFY

**MOUNTING OPTIONS & LEAD WIRES**



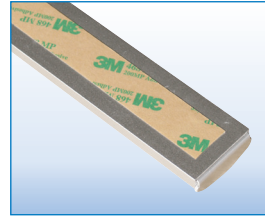
**TM – TAB MOUNT**

Mounting Tab at Both Ends  
(Screws by Others)



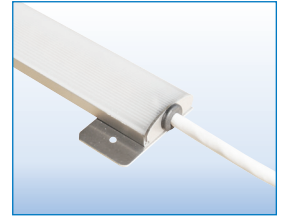
**IM – INSIDE SCREW MOUNT**

1/4" Inside Mounting Holes  
(Screws by Others)



**DFT – TAPE MOUNT**

3M Double Face Tape



**3' LEAD WIRE STANDARD**

Right Side Lead Wire for  
TM – Tab Mounting  
(See Picture Above)  
Specify if longer than  
3' is required.

**REMOTE LED DRIVERS WITH ENCLOSURE** Universal Voltage (120 – 277 / 12VDC)



PART NO.	WATTS	DIMENSIONS
PL-LD – O20W – 12	20W	8" x 2" x 1 1/4"
PL-LD – O60W – 12	60W	14" x 2" x 2"
PL-LD – O60W – 12 – DIM	60W	14" x 2" x 2" (0-10V DIMMING)

Fixtures can be grouped on a single driver.

The number of fixtures X watts/fixture = total watts to choose the correct driver(s).

The number of fixtures connected to a single driver must not exceed driver max wattage ratings; Refer to chart below.

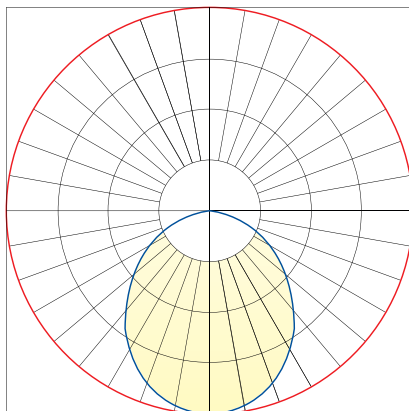
15' Max Remote Driver Distance

**MAXIMUM FEET PER DRIVER**

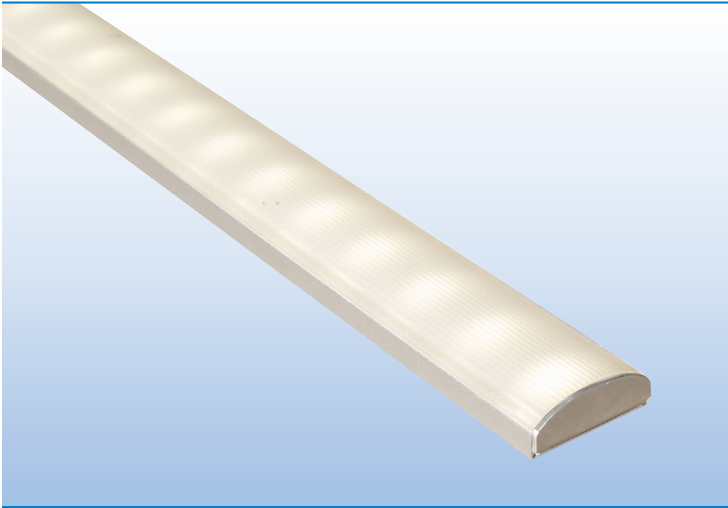
20W DRIVER	60W DRIVER
7' MAX (18.2W)	16' MAX (41.6W)

Maximum continuous run on a single feed not to exceed 16'.

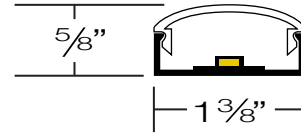
**POLAR GRAPH**



DISPLAY / UNDERCABINET / TASK / INDIRECT / ACCENT



PROJECT:
TYPE:



### SPECIFICATIONS

<b>HOUSING</b>	Extruded aluminum housing. Continuous runs available.
<b>FINISH</b>	Satin anodized or white paint finish standard. Custom finish optional.
<b>LENS</b>	Extruded DR acrylic, snap-on frosted widespread lens.
<b>LED DRIVER</b>	Remote, universal voltage; 0-10V dimming standard; custom programmable. (Order Separately)
<b>MOUNTING</b>	Surface Mount; See page 2 for options and details.
<b>LED's</b>	60,000 hours. (L70), High uniformity, 80 CRI
<b>CERTIFICATION</b>	ETL/CSA listed for damp locations.  2001431  MADE IN THE USA

### LED COLOR & LUMEN OPTIONS

4' – 24" BOARDS		LUMENS PER FOOT – WATTS PER FOOT – LUMENS PER WATT								
LED COLOR	CRI	LOW			MEDIUM			HIGH		
WHITE 2700K	80	500 L/FT	3.5 W/FT	136 L/W	870 L/FT	6.5 W/FT	130 L/W	1160 L/FT	9.0 W/FT	127 L/W
WHITE 3000K	80	530 L/FT	3.5 W/FT	144 L/W	915 L/FT	6.5 W/FT	137 L/W	1220 L/FT	9.0 W/FT	133 L/W
WHITE 3500K	80	535 L/FT	3.5 W/FT	144 L/W	920 L/FT	6.5 W/FT	137 L/W	1225 L/FT	9.0 W/FT	133 L/W
WHITE 4000K	80	560 L/FT	3.5 W/FT	151 L/W	970 L/FT	6.5 W/FT	145 L/W	1290 L/FT	9.0 W/FT	140 L/W

Higher lumen packages available.

### FIXTURE LENGTHS

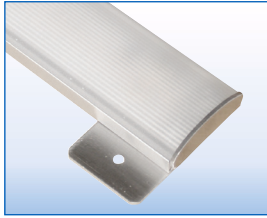
NOMINAL LENGTH	1'	2'	3'	4'	5'	6'	7'	8'
ACTUAL LENGTH	13"	24"	35"	46"	60"	73"	84"	97"

See next page for fixture wattage; Consult factory for fixtures longer than 8'

### PART NUMBER

SERIES	LUMENS	COLOR	LED DRIVER	MOUNTING	FINISH	LENGTH
ALX4-HP	L LOW	27K 2700K	R REMOTE	TM TAB MOUNT	S SATIN	1' 5'
	M MEDIUM	3K 3000K	* ORDER SEPARATELY SEE NEXT PAGE FOR OPTIONS	IM INSIDE MOUNT	W WHITE	2' 6'
	H HIGH	35K 3500K		DFT TAPE MOUNT	C CUSTOM	3' 7'
	CP CUSTOM PROGRAMMED (Specify Lumens/FT or Watts/FT)	4K 4000K				4' 8'

**MOUNTING OPTIONS & LEAD WIRES**



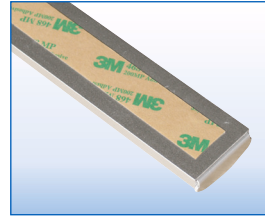
**TM – TAB MOUNT**

Mounting Tab at Both Ends  
(Screws by Others)



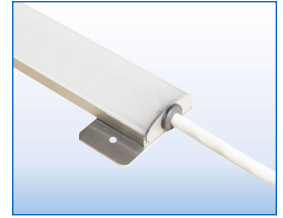
**IM – INSIDE SCREW MOUNT**

1/4" Inside Mounting Holes  
(Screws by Others)



**DFT – TAPE MOUNT**

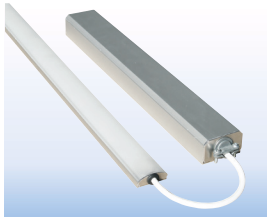
3M Double Face Tape



**3' LEAD WIRE STANDARD**

Right Side Lead Wire for  
TM – Tab Mounting  
(See Picture Above)  
Specify if longer than  
3' is required.

**REMOTE LED DRIVERS WITH ENCLOSURE** Universal Voltage (120/277) 0–10V Dimming



PART NO.	WATTS	DIMENSIONS
<b>PL-LD - 20W</b>	20W	12" X 2" x 1 1/4"
<b>PL-LD - 30W</b>	30W	12" X 2" x 1 1/4"
<b>PL-LD - 50W</b>	50W	12" X 2" x 1 1/4"
<b>PL-LD - 80W</b>	80W	16" X 2" x 1 1/4"

Fixtures can be grouped on a single driver.

The number of fixtures X watts/fixture = total watts to choose the correct driver(s).

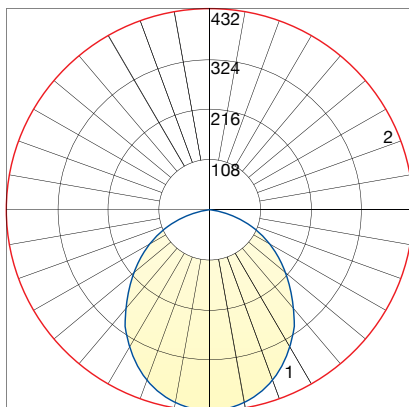
The number of fixtures connected to a single driver must not exceed driver max wattage ratings; Refer to chart below.

20' Max Remote Driver Distance

**WATTS PER FIXTURE**

LUMENS	1' FIXTURE	2' FIXTURE	3' FIXTURE	4' FIXTURE	5' FIXTURE	6' FIXTURE	7' FIXTURE	8' FIXTURE
LOW	3.5W	7W	10.5W	14W	17.5W	21W	24.5W	28W
MEDIUM	6.5W	13W	19.5W	26W	32.5W	39W	45.5W	52W
HIGH	9W	18W	27W	36W	45W	54W	63W	72W

**PHOTOMETRICS**



**POLAR GRAPH**  
FILE NAME: L10137801R01.IES  
Maximum Candela = 432 (Low Lumens)

SPECIFICATIONS ARE SUBJECT TO CHANGE DUE TO CONTINUOUS ADVANCES IN TECHNOLOGY  
© PRIMUS LIGHTING, INC. ALL RIGHTS RESERVED