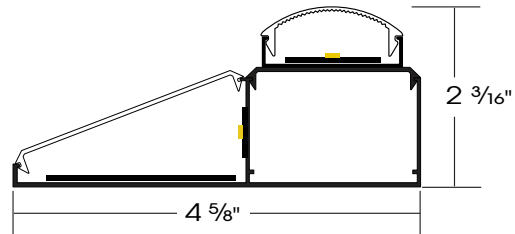
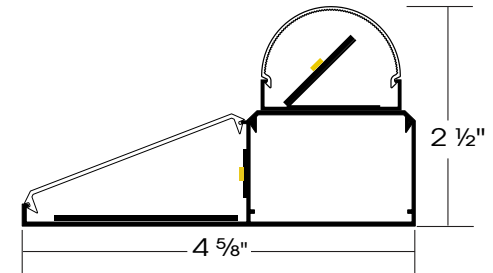


COVE 5+ (CV5+) SERIES

(CV5+) COVE 5 PLUS



(CV5+A) COVE 5 PLUS ASSYMETRYC



SERIES	LED TYPE	LUMENS	REMOTE DRIVER	OPTIONS	ENDCAPS	MOUNTING	FINISH	LENGTH
CV5+ CV5+A	STANDARD LED	FOR STANDARD LED	FOR STANDARD LED	EM PACKS	STANDARD	SURFACE MOUNT		2'
	27K 2700k	L LOW	UNV0% 0-10V0%	EM1	BEK	SMF	W WHITE	3'
	30K 3000k	M MEDIUM	UNV1% 0-10V1%	800 LUMENS	BOTH END K/O	SMW	S SATIN	4'
	35K 3500k	H HIGH	UNV10% 0-10V10%	EM2 1400 LUMENS	OEK	SMV	B BLACK	5'
	40K 4000k	CL CUSTOM LUMENS	UNVCD% 0-10VCD		ONE END K/O	JBP	C CUSTOM	6'
			TRIAC 2 WIRE		BE		A ANTI MICROBIAL	7'
			DALI DALI	BLANK ENDS				8'
			LTRN LUTRON			CABLE SUSPENDED		9'
					FD	CSHD(48 or 72)		10'
					FIELD DRILL	CSV(48 or 72)		11'
					ARCHITECTURAL		12'	
					ABE		OTHER SPECIFY	
					BLANK ENDS		PTN	



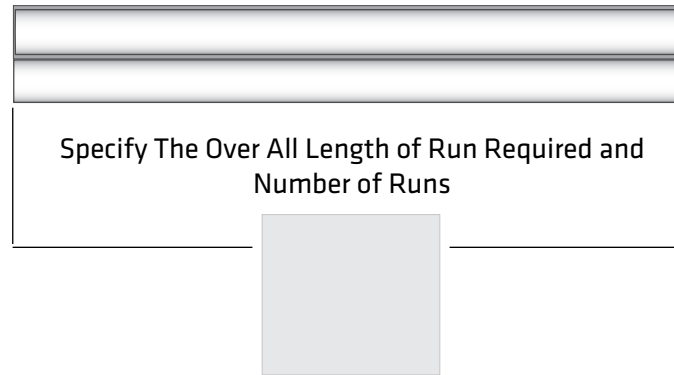
25072 Anza Dr
Valencia, CA 91355
626.442.4600
primuslighting.com

Job Name: _____ Type: _____
 Part No: _____
 SO / Quote No: _____ Dwg Date: _____ Revised Date: _____
 Approved By: _____ Date: _____

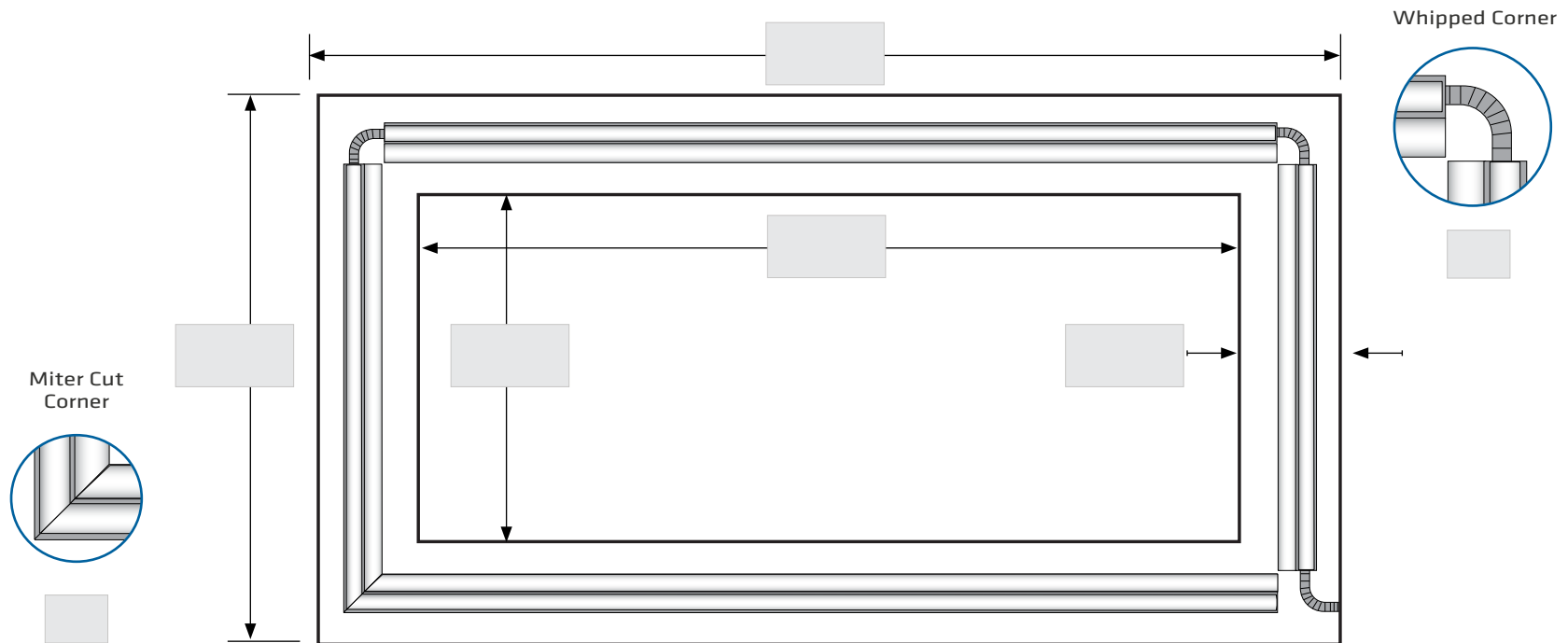
COVE 5+ (CV5+) SERIES

STRAIGHT FIXTURES

FRONT VIEW



PATTERN FIXTURES



25072 Anza Dr
Valencia, CA 91355
626.442.4600
primuslighting.com

Job Name:	_____	Type:	_____
Part No:	_____		
SO / Quote No:	_____	Dwg Date:	Revised Date:
Approved By:	_____	Date:	_____