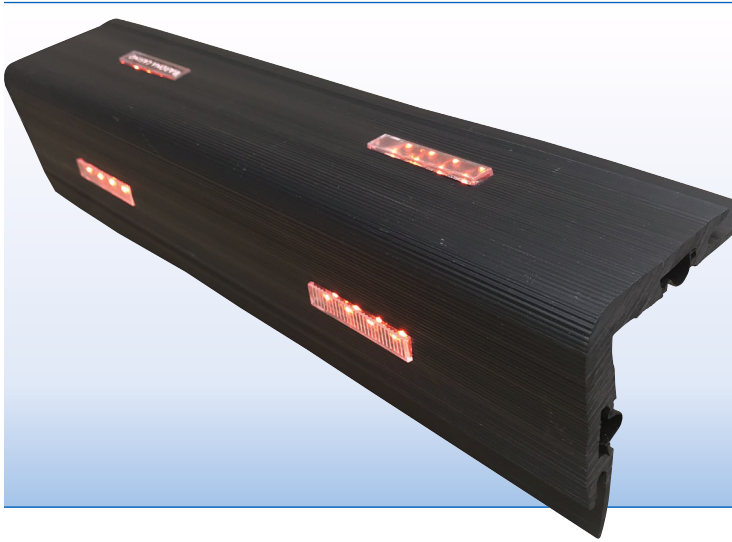
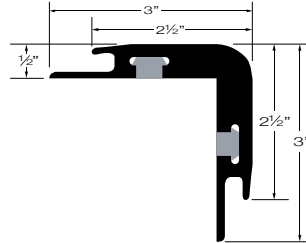


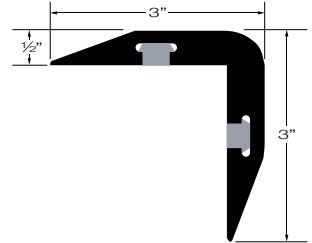
## LED STEP LIGHTING



PROJECT:
TYPE:





PL-LSL-C/C  
CARPET TO CARPET



PL-LSL-F/F  
FLOOR TO FLOOR

### SPECIFICATIONS

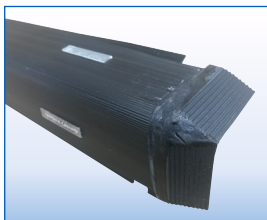
EXTRUSION	Durable black, UL approved flame retardant material, non slip, high grip, flexible PVC rubber.
LENS	Clear prismatic, impact resistant polycarbonate.
LEDS	Available in white, blue, green, red and amber LED's.
LED BOARD	Replaceable with 4 LED/boards at .25W per board for all colors.
POWER	12VAC Remote Class II transformer required.
CERTIFICATION	UL Listed   MADE IN THE USA

LED SPACING	LED COLOR	WATTS/MODULE	WATTS/FT	MAX RUNS (60W)
9"O/C	WHITE / BLUE	.25W	.66W	75'
	AMBER / RED / GREEN			
12"O/C	WHITE / BLUE	.25W	.50W	100'
	AMBER / RED / GREEN			
18"O/C	WHITE / BLUE	.25W	.34W	145'
	AMBER / RED / GREEN			

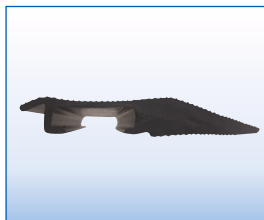
### PART NUMBER

SERIES	SPACING	LED COLOR	POWER FEED SIDE	END CAPS	LENGTH
PL-LSL-CC CARPET TO CARPET	9 9" O/C	W5K WHITE 5000K	RSF RIGHT SIDE FEED	R RIGHT END	SPECIFY
PL-LSL-FF FLOOR TO FLOOR	12 12" O/C	W35K WHITE 3500K	LSF LEFT SIDE FEED	L LEFT END	
	18 18" O/C	B BLUE		B BOTH ENDS	
	OTHER, SPECIFY	G GREEN		N NONE	
		R RED			
		A AMBER			

ACCESSORIES



**R** RIGHT END CAP  
**L** LEFT END CAP  
 FACTORY ATTACHED ONLY  
 (OPTIONAL)



**PL-LSL-WW**  
 WIREWAY (OPTIONAL)  
 ORDER SEPARATELY



**PL-ADH**  
 ADHESIVE (OPTIONAL)  
 ORDER SEPARATELY

TRANSFORMERS

CLASS 2 MAGNETIC TRANSFORMERS

Secondary protection provided (resettable 5A circuit breakers).

Isolated secondary output.

Outdoor listed enclosure NEMA 3R.

Potted for quiet operation and long life.

Dimmable with MLV dimmers only.

ETL listed. Meets UL 1571, 1838 and Article 411 of N.E.C.



PART NUMBER	WATTS	PRIMARY	SECONDARY	BREAKERS	DIMENSIONS	WEIGHT
PLT2 -60 - 12	60	120V	12V	1-5A	6 3/4" x 4 7/8" x 4 5/8"	5 LBS
PLT2 -100 - 12	100	120V *	12V	2-5A	6 3/4" x 4 7/8" x 4 5/8"	10 LBS
PLT2 -150 - 12	150	120V	12V	3-5A	6 3/4" x 4 7/8" x 4 5/8"	11 LBS
PLT2 - 250 - 12	250	120V	12V	4-5A	6 3/4" x 4 7/8" x 4 5/8"	13 LBS

\*Available in 277V Primary

CLASS 2 ELECTRONIC TRANSFORMERS WITH ENCLOSURE

Dimmable with standard incandescent dimmers (ELV).

Internal overload protection.

Aluminum enclosures with K/O's and terminal blocks.

For use with short runs and short remote distances only.



PART NUMBER	WATTS	PRIMARY	SECONDARY	DIMENSIONS
PLT-E-60-12V	60	120V	12V	7" x 2" x 1 1/4"