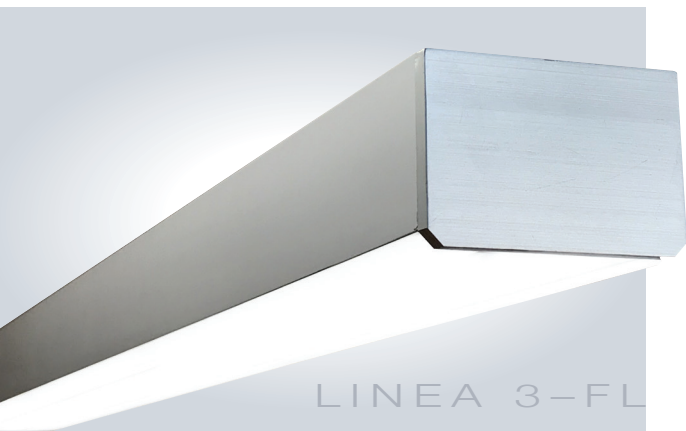
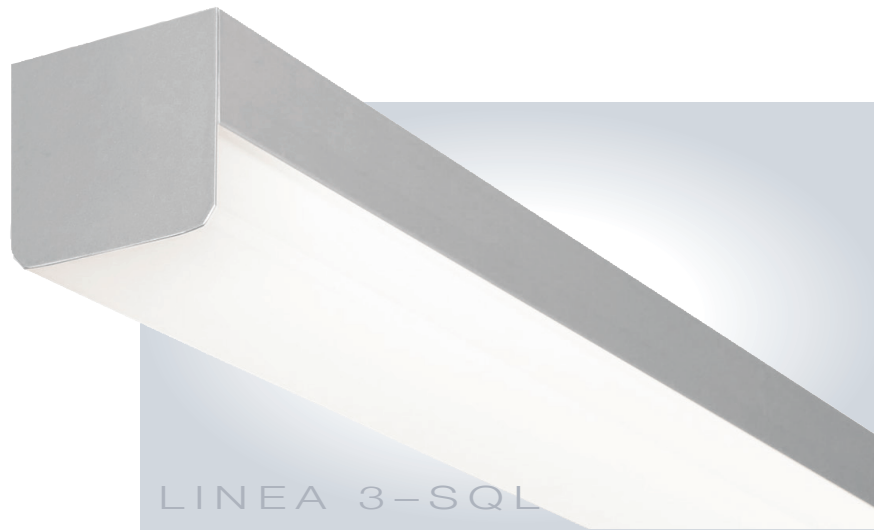
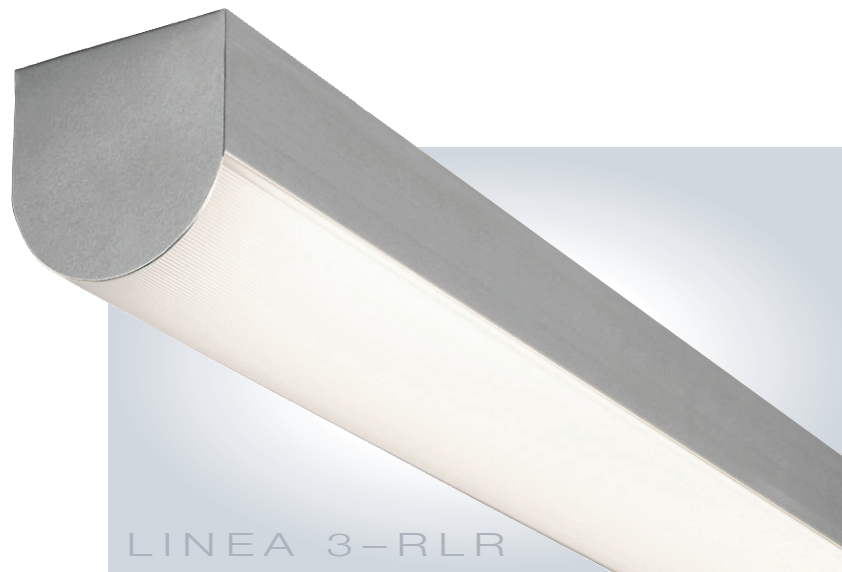


# LINEA 3



# 3" WIDE SERIES



SPECIFICATIONS

LINEA 3 - SQL

LINEA 3 - FL

LINEA 3 - RLR

HOUSING

Extruded aluminum housing up to 12' long. Continuous runs available.

FINISH

Satin anodized or white paint finish standard. Custom powder coat finish optional.

LENS

Snap on, extruded white frosted DR acrylic, with wide distribution and no pixelization.

LED DRIVER

Integral, universal voltage; 0-10V dimming standard; 1% dimming optional by Osram Sylvania.

OPTIONS

- Architectural Endcaps
- Motion Sensors
- EM Packs

MOUNTING

- Surface Mount
- Cable Suspended

LED's

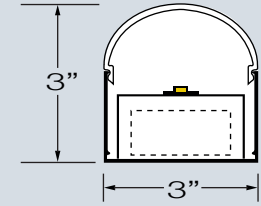
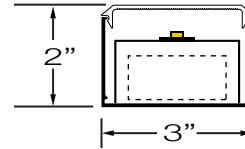
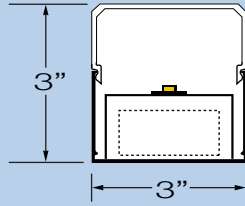
60,000 hours. (L70), High uniformity, 85 CRI, by Osram Sylvania.

*Please see website for complete specifications*

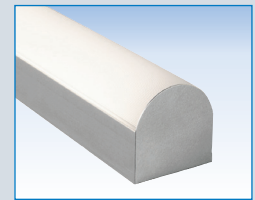
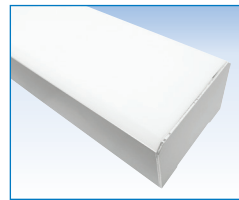
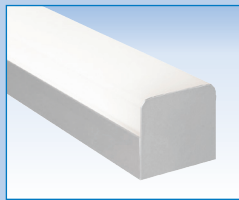
*Wet Location Available  
See Elements Series*

CERTIFICATION

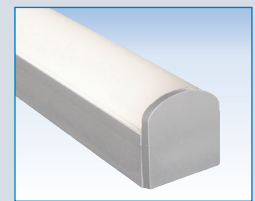
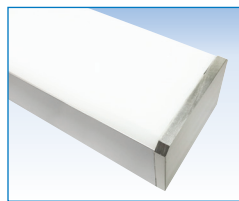
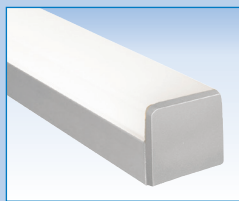
ETL/CSA listed damp locations.



STANDARD ENDCAPS



ARCHITECTURAL ENDCAPS



MOTION SENSORS

