

# ELEMENTS

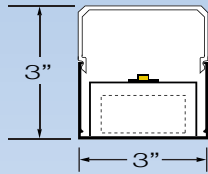
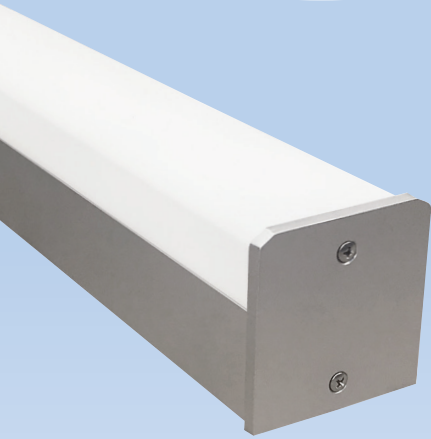


LED WET LOCATION

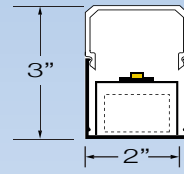


## ELEMENTS 3

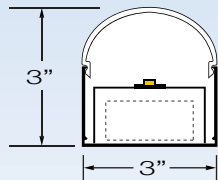
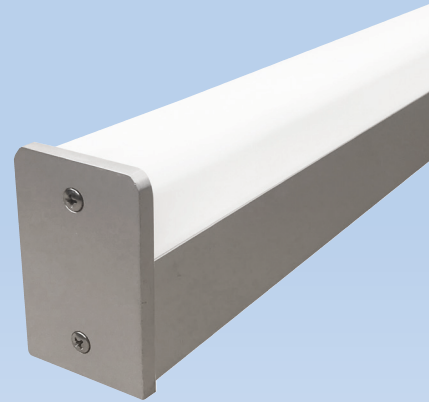
## ELEMENTS 2



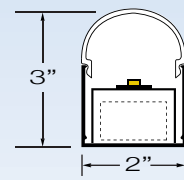
SQL



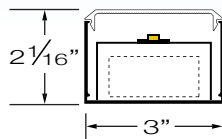
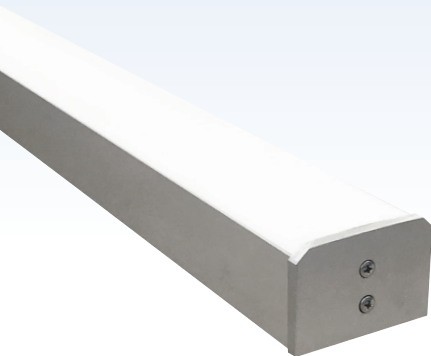
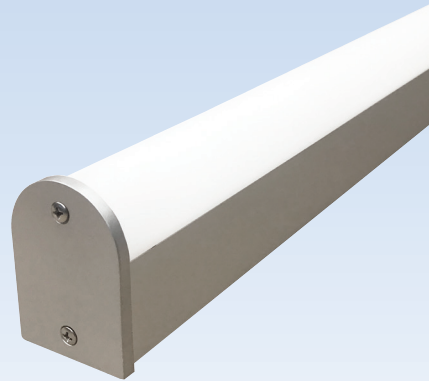
SQL



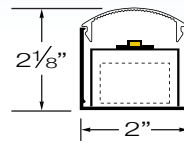
RLR



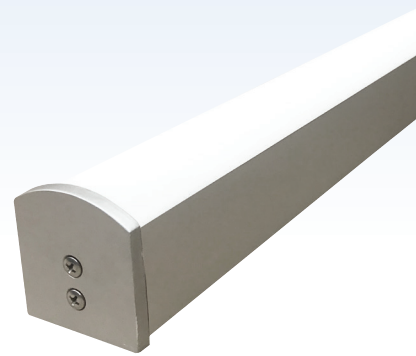
RLR



FL



FRL



## SPECIFICATIONS

### HOUSING

2" & 3" Wide extruded aluminum housing up to 12' long. Continuous runs available.

### FINISH

Satin anodized or white paint finish standard. Custom finish optional.

### LENS

Three options extruded DR acrylic, snap-on frosted widespread lens. No Pixelization

### LED DRIVER

Integral, universal voltage; 0-10V dimming standard; 1% or 10% dimming.

### LED's

(LED boards) 50,000 hours. (L70), 85 CRI, 2700K, 3000K, 3500K and 4000K.

### MOUNTING

Surface Mount

### CERTIFICATION

ETL/CSA listed for wet locations.

