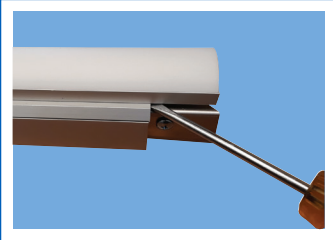


INSTALLATION INSTRUCTIONS

Tools Required:

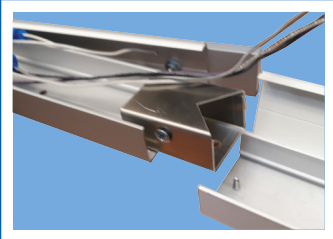
Wire Stripper, 5/16" Nut Driver, Flat Screw Driver and Philips Screw Driver. Mounting screws and wire nuts by others.

**1**

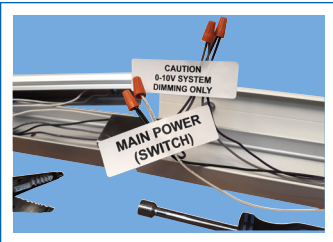
Insert a flat screw driver at the end of one section between flex joiner and aluminum cover to access the wiring and joner to connect to the next section.
(Do not remove any lens cover.)

**2**

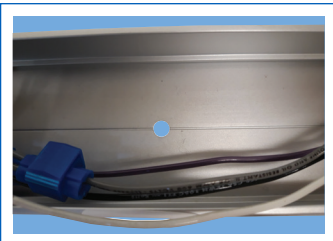
Repeat step 1 to another section to start connecting sections.
(Do not remove lens cover.)

**3**

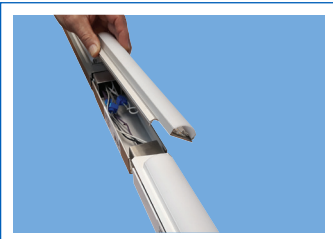
Insert flex joiner in to the pre-attached screw on to the next section, connect and secure using the provided flat washer and nylock nut. A 5/16" nut driver is the correct tool.

**4**

Power runners are pre-installed. Connect both power and control leads as labeled. Identify wires and connect main power and dimming wires from one section to the other section. Continue same steps to connect more sections to complete the required run length. Service power can connect at the end of run or on the side of any section, drilled with unibit and use a snap in 90° fitting.

**5**

Secure the fixture to the mounting surface using the pre-drilled mounting holes. (Mounting screws by others.)

**6**

Snap covers back on to complete assembly.